

RIGHT HOME

285

AREA

BUYUKCEKMECE



RIGHTHOME.COM.TR

righthome
real estate consultancy

Project Overview



Project area
22.550 M²

It is a housing project built on a land area of 22.551 square meters.
The project consists of 3 blocks that contain 195 houses.
The apartment areas ranging between 80- 195 square meters.
The project is ready for immediate housing.

Project Site

The project located in Buyukcekmece district on the European side of Istanbul, the new real estate investment center. The unique and strategic location of the project near to Buyukcekmece Lake, which offers you with comfort and pleasure.

All the stores, shopping points, private and government schools, preschools, kindergartens, banks, cafes and restaurants are just at a one-step distance to the project.

Maslak
Area

45

Minutes

Istanbul
Airport

40

Minutes

West Istanbul
Marina

20

Minutes

Taksim
Area

45

Minutes

Mall of
Istanbul

15

Minute



Project's Features



Garden



Elevator



Security



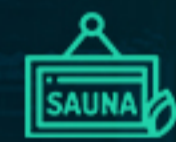
Play-
grounds



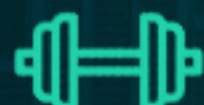
Children's
Playground



Swimming
Pool



Sauna



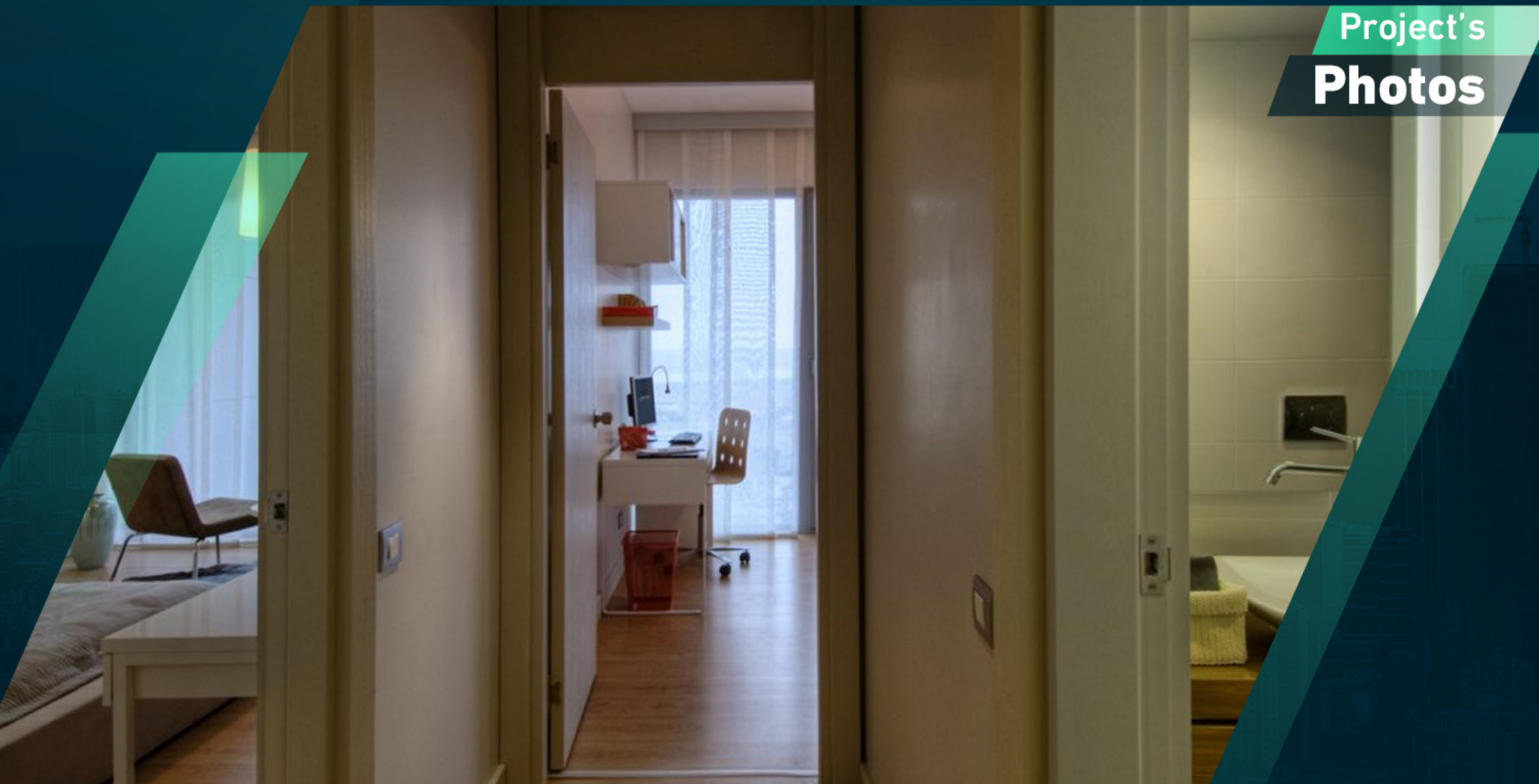
Gym



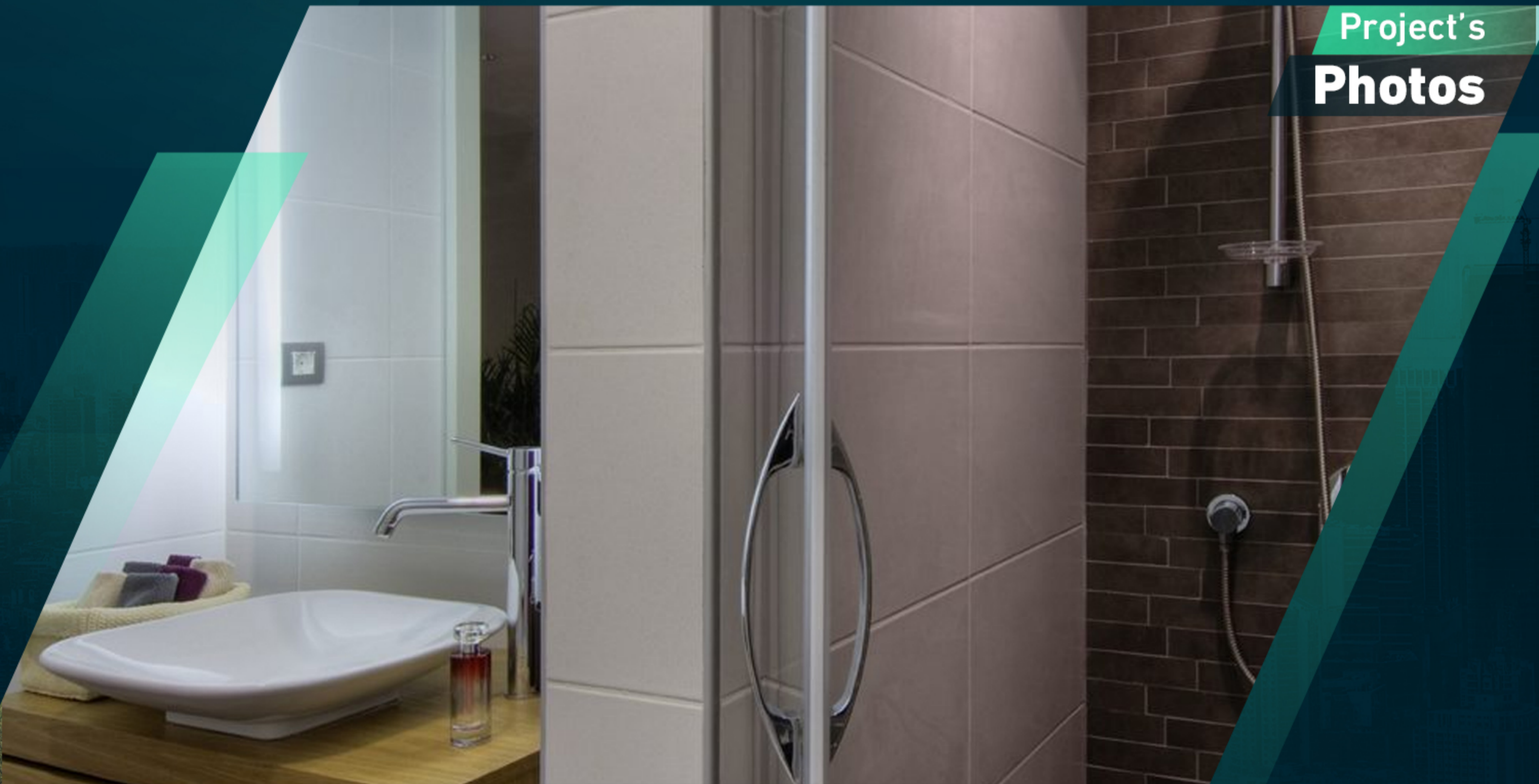
Parking



Project's
Photos



Project's
Photos



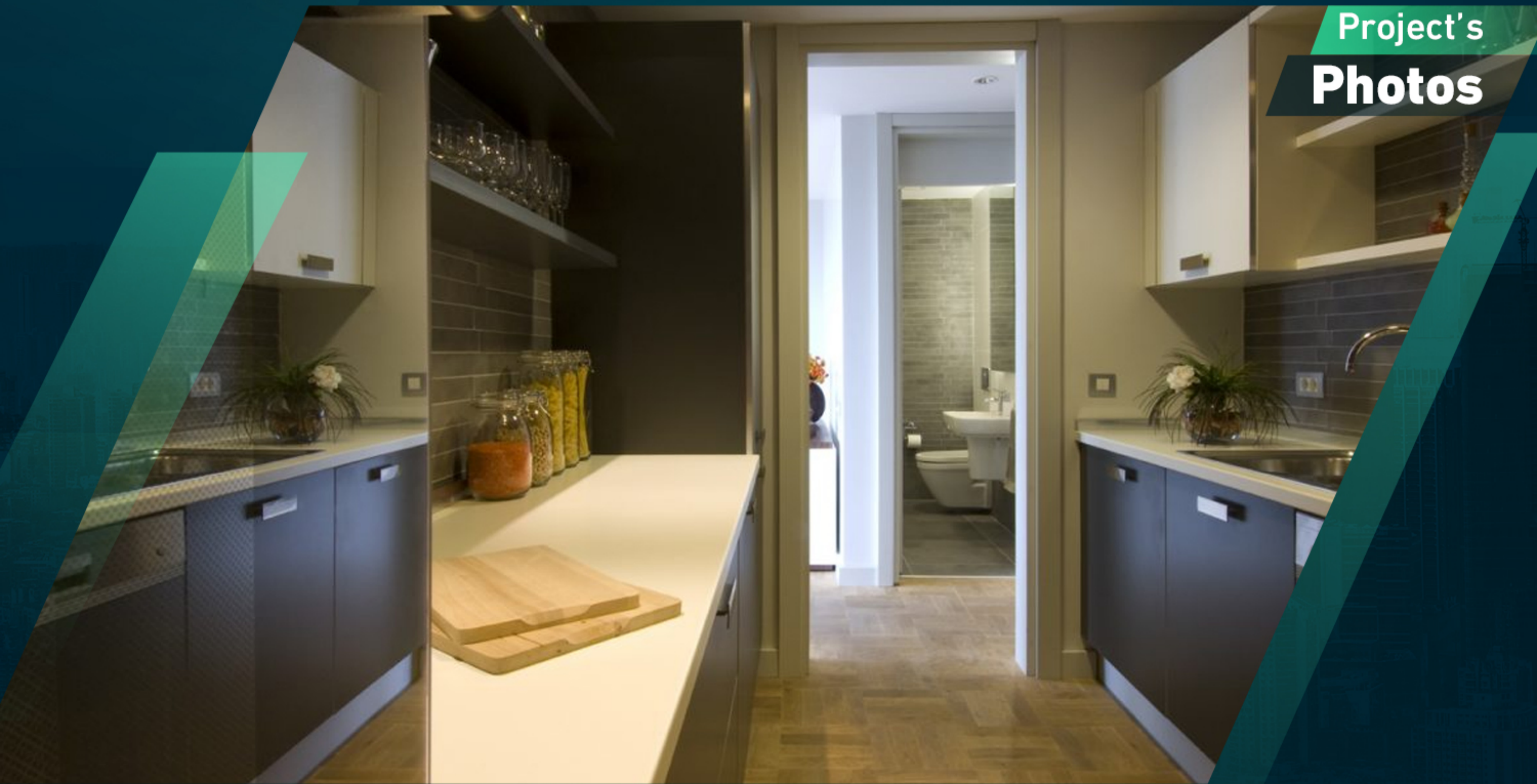
Project's
Photos



Project's
Photos



Project's
Photos



Project's
Photos



About

Us

Right Home is a leading company specializing in real estate consultancy and brokerage.

We help buyers **to buy** and sellers **to sell**.

We provide luxury apartments, smart homes, elegantly designed offices, modern constructions and all consultancy services.

Our head office located in **Istanbul**, Turkey.

righthome
real estate consultancy

 righthome_tr
righthome_tr
righthome
righthometr
+90 212 573 51 93
www.righthome.com.tr
info@righthome.com.tr