

RIGHT HOME

AREA
BEYLIKDUZU

252



RIGHTHOME.COM.TR

righthome
real estate consultancy

Project Overview



Project Area
100.000 M²

It is a housing and investing project built on a land area of 100.000 square meters.

The project consists of 2 stages with an investment of 250 million dollars on a total area of 100 thousand square meters, which will include 1420 apartments and 32 stores.

In the project, which offers 25 different flats from 1+1 to 4+1, the blocks consist of 8 floors and the distances between the blocks vary from 15 meters to 200 meters.

There are 820 residences in the first phase of the project and 650 residences in the second phase.

Project Site

The project located on the European side of Istanbul, on the Beylikduzu area, known by its green areas and full services. The project is easily accessible by car and public transportations. The project promises a comfortable life for its residents that it is close to main roads, E5 and TEM Highway bridges, and airports, and it is easily accessible by public transportation.

Istanbul
Airport

50

Minutes

E5
Highway

10

Minutes

Metrobus
Station

7

Minutes

Ataturk
Airport

30

Minutes

Marmara Park
Mall

10

Minutes

West Istanbul
Marina

4

Minutes



Project's Features



Elevator



Children's
Playground



Security



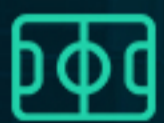
Parking



Garden



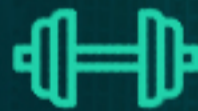
Swimming
Pool



Play-
grounds



Sauna



Gym



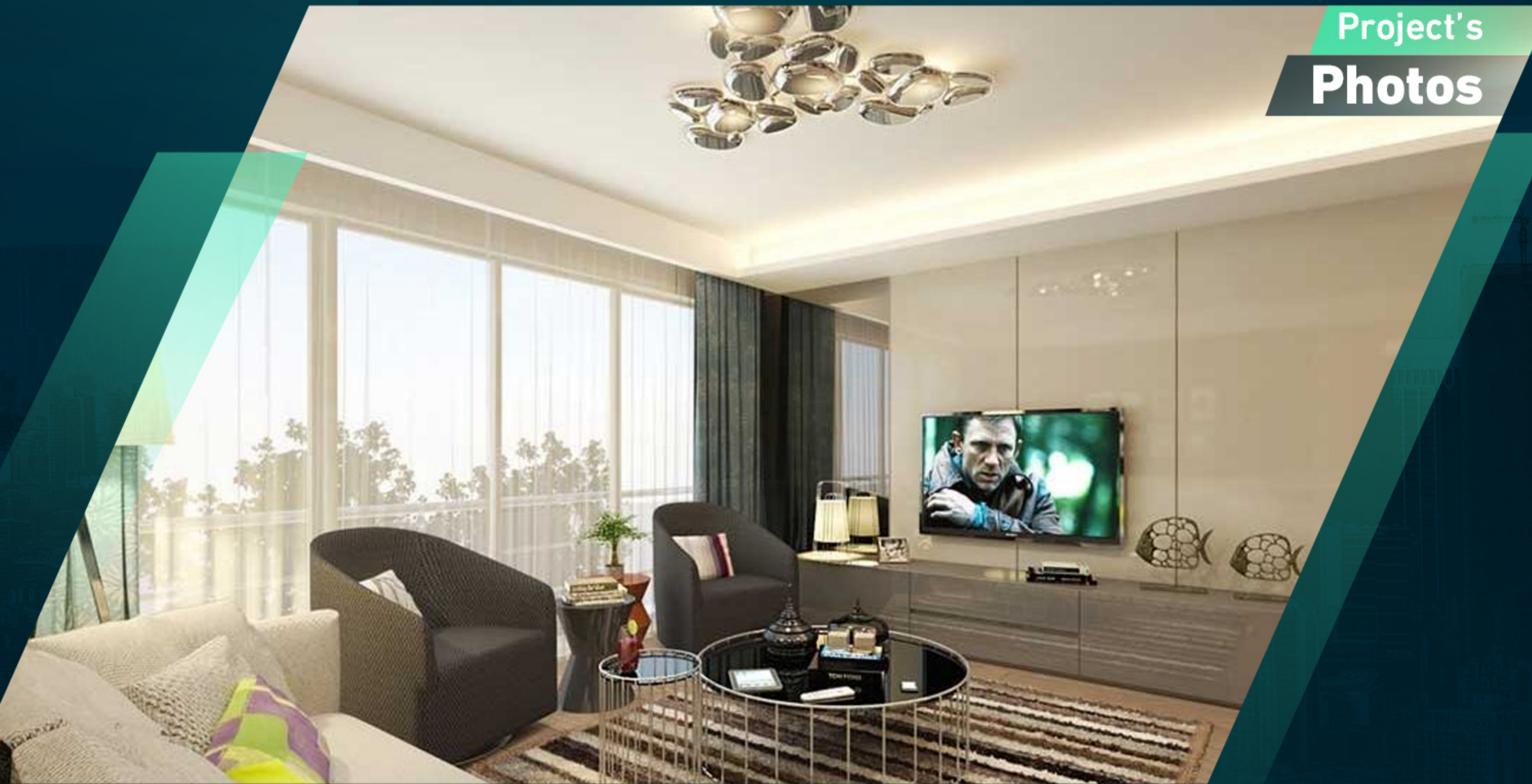
Turkish
Bath



Project's
Photos



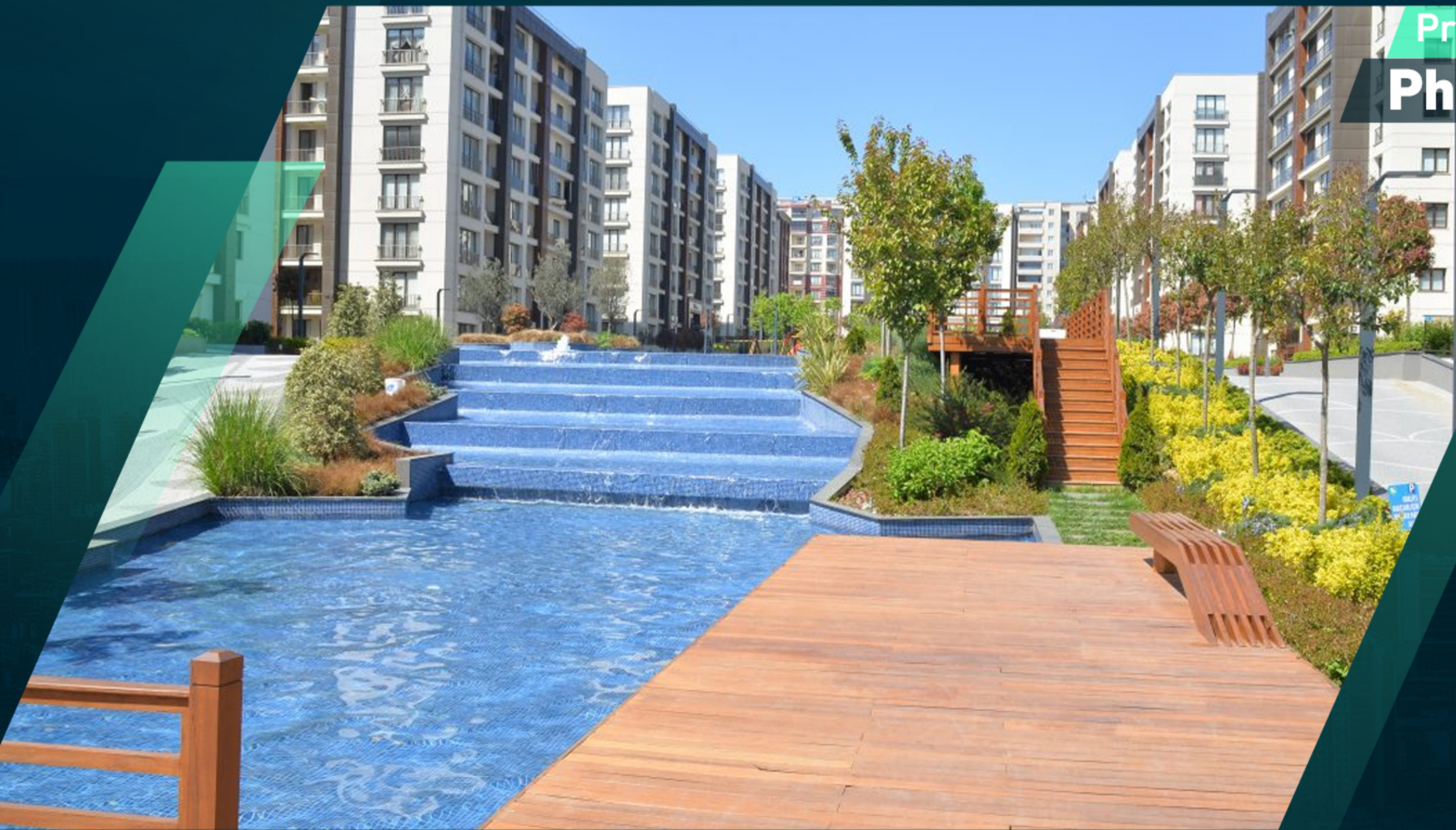
Project's
Photos



Project's
Photos



Project's
Photos



About

Us

Right Home is a leading company specializing in real estate consultancy and brokerage.

We help buyers **to buy** and sellers **to sell**.

We provide luxury apartments, smart homes, elegantly designed offices, modern constructions and all consultancy services.

Our head office located in **Istanbul**, Turkey.

righthome
real estate consultancy

 righthome_tr
righthome_tr
righthome
righthometr
+90 212 573 51 93
www.righthome.com.tr
info@righthome.com.tr