

RIGHT HOME

AREA

BEYLIKDUZU

415

RIGHTHOME.COM.TR

righthome
real estate consultancy

Project Overview



Project area
18.000 M²

The project provides the best concept for family life.

The project built on a land area of 18.000 Sqm, and 70% of the project dedicated to green fields.

The project consists of 5 blocks that contain 126 residential units.

Project Overview

The project includes multiple options for apartments ranging from 2+1 to 7+1 and duplexes with wonderful sea view or the Yasam Vadi view.

Great opportunity for investment and a pleasant lifestyle in a quiet and family atmosphere with a view of the sea and nature.

The project includes a spa center and a cultural center that organizes many social events.

The project provides its residents with many services that are available 24 hours, such as swimming pool, gym, Turkish bath, sauna, children's playground and green areas.

The project still under-construction but the title deed is ready.

The delivery date of the project is 6/2022.



Project Site

The project located in Beylikduzu area, on the European side of Istanbul.

The project strategically located in Beylikduzu with easy access away from the crowd to the E5 road.

The project is adjacent to the new second section of the (Yasam Vadisi) project, which is the largest open social facility, and it is close to recreational centers and the marina and yacht port.

The project surrounded by many shopping centers and upscale restaurants and cafes.



Project Site

Entertainment centers, sailing and yacht port, restaurants, cafes and more, will be just a few steps away from your home.

Beylikduzu is suitable for families, as it contains social facilities, shopping centers, gardens, and other basic services that guarantee families a luxurious life.

The project promises a comfortable life for its residents as it is close to main roads, E5 and TEM highways, and airports, and is easily accessible by public transportation.



Project Site

West Istanbul
Marina

5

Minutes

E5
Highway

5

Minutes

Gurpınar
Sahil

15

Minutes

Yasam
Vadisi

5

Minutes

Akasya
Mall

5

Minutes

Istanbul
Airport

30

Minutes

Metrobust
station

7

Minutes

Perlavista
Mall

7

Minutes

Marmara Park
Mall

7

Minutes



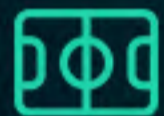
Project's Features



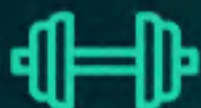
Garden



Elevator



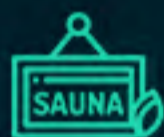
Play-
grounds



Gym



Swimming
Pool



Sauna



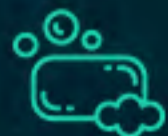
Parking



Security



Available
Transportaion



Turkish
Bath



Restaurant
and Cafe



Project's
Photos



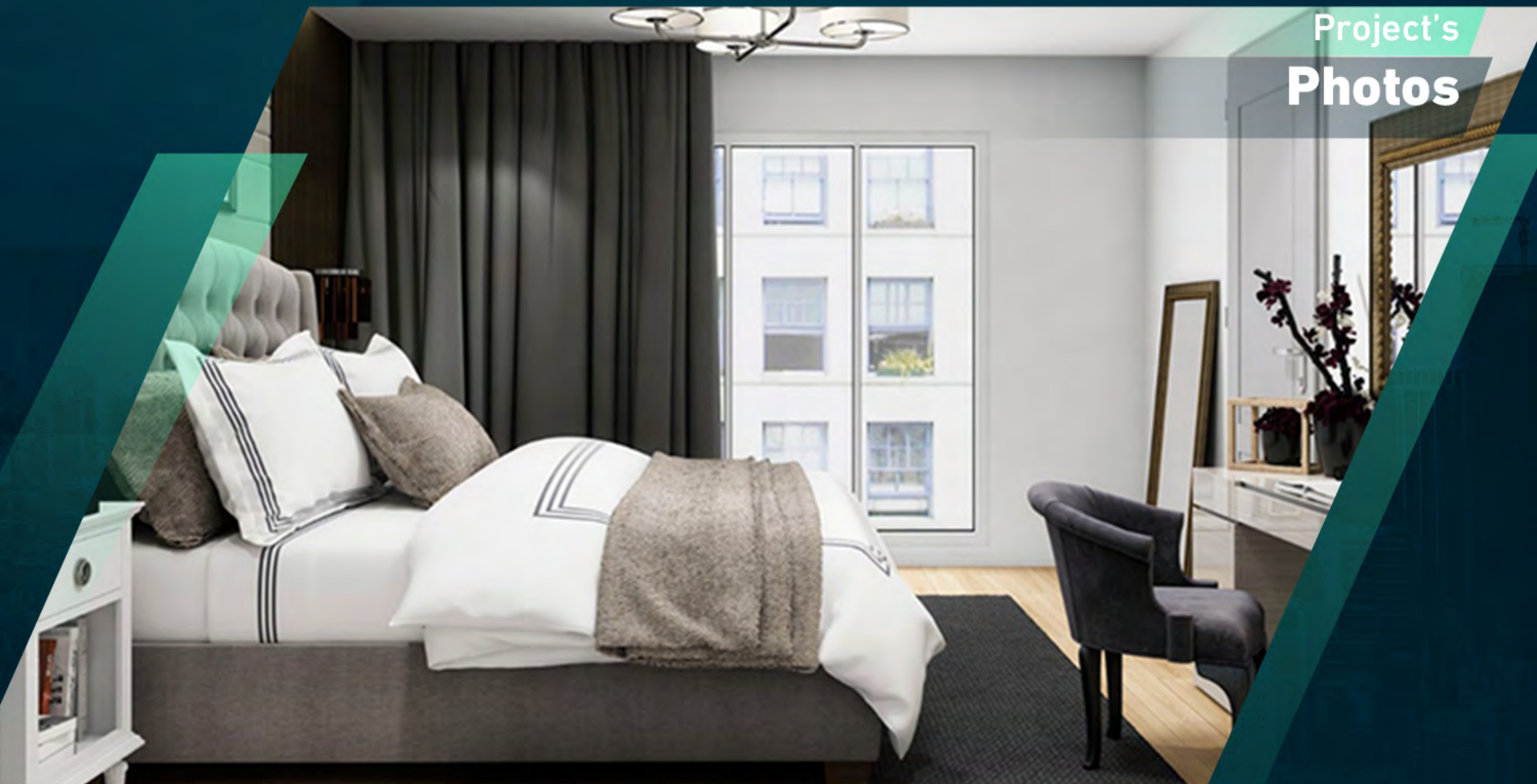
Project's
Photos



Project's
Photos



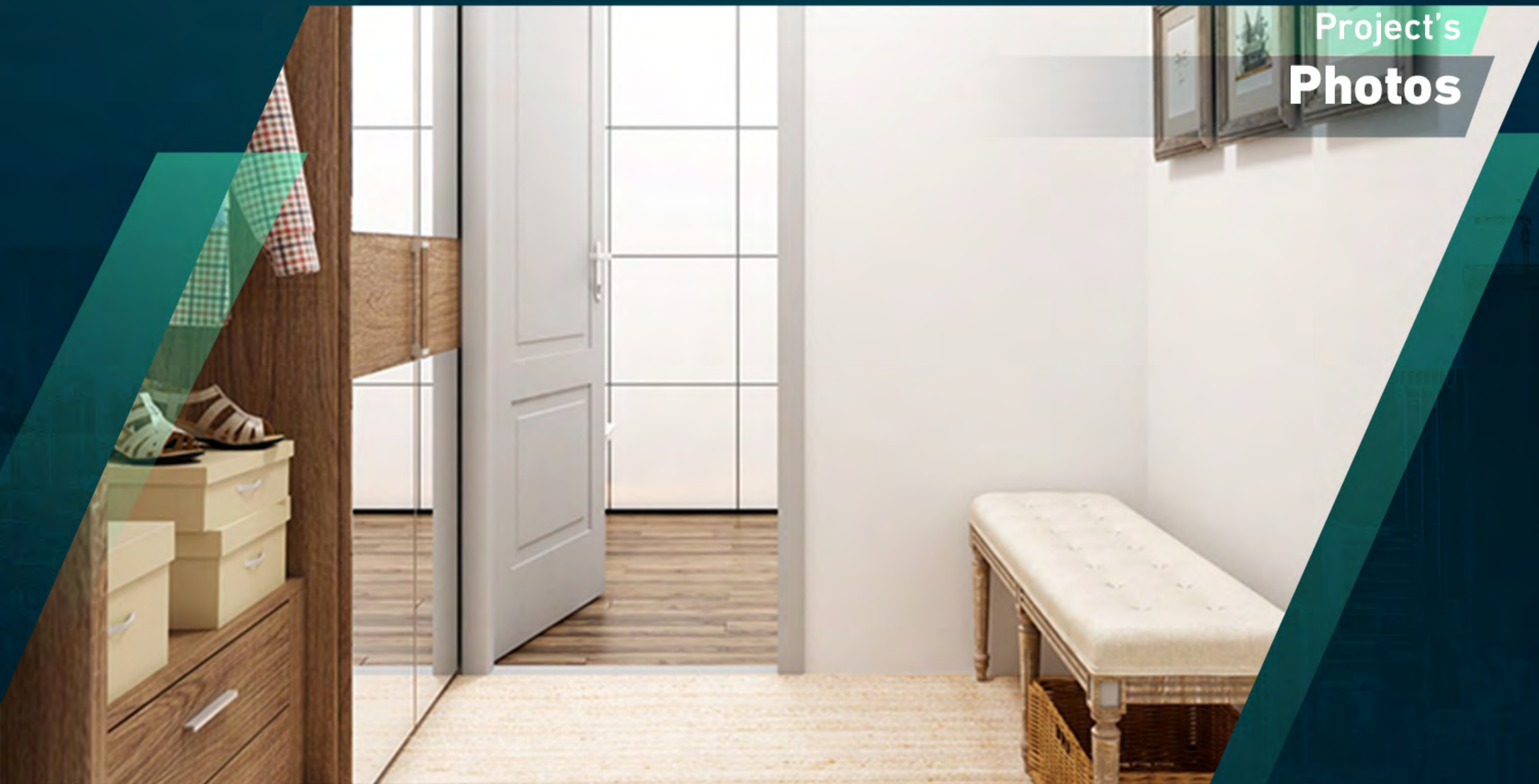
Project's
Photos



Project's
Photos



Project's
Photos



About Us

Right Home is a leading company specializing in real estate consultancy and brokerage.

We help buyers **to buy** and sellers **to sell**.

We provide luxury apartments, smart homes, elegantly designed offices, modern constructions and all consultancy services.

Our head office located in **Istanbul**, Turkey.

righthome
real estate consultancy

 righthome_tr
 righthome_tr
 righthome
 righthometr
 +90 212 573 51 93
 www.righthome.com.tr
 info@righthome.com.tr