

RIGHT HOME

AREA
BEYKOZ

299



[RIGHTHOME.COM.TR](https://righthome.com.tr)

righthome
real estate consultancy

Project Overview



Project area
1.157.000 M²

It is a luxurious investment project that built on a land area of 1.157.000 square meters.

The project includes 1400 villas.

The project offers different villas types from 2+1 to 5+1, Duplex, Triplex, and Private villas.

The villas areas are ranging from 153 - 440 square meters.

A unique project, where you can enjoy your life in the center of Nature.

The project offers a quiet and healthy life choice away from the city.

Riva has become the most attractive part of Istanbul thanks to Riva Creek, Riva Castle, and the unspoiled forest lands that offer fresh air.

The delivery date of the first phase of the project is December 2021, the second phase is December 2023, and the third phase is December 2025.

Project Site

The project is located in the Riva area in Beykoz area, on the Asian side of Istanbul.

Beykoz is one of the quietest areas of Istanbul, with many green forests rich in chestnut, linden, hazelnut, pine, and oak trees.

The project is located near the highways, which offers you easy accessibility to everywhere.

The project is near the Bosphorus Strait, and it has a forest view.

Yavuz Sultan Selim
Bridge

6

Minutes

July Martyrs 15
Bridge

25

Minutes

Fatih Sultan Mehmet
Bridge

15

Minutes

Sabiha
Airport

30

Minutes



Project's Features



Elevator



Sauna



Security



Parking



Children's
Playground



Swimming
Pool



Play-
grounds



Gym



Turkish
Bath



Project's
Photos



Project's
Photos



Project's
Photos



Project's
Photos



Project's
Photos



Project's
Photos



Project's
Photos



A1 TYPE 2+1

- 1 Hallway 12.85 m²
- 2 Technical Room 1.88 m²
- 3 Storage Room 5.78 m²
- 4 Kitchen 11.84 m²
- 5 Premises 25.55 m²



block 07



block 03



block 02



A1 TYPE

2+1

6	Windbreak	3.59 m ²
7	Hallway	7.58 m ²
8	Living Room	13.30 m ²
9	Bathroom	4.14 m ²
10	Master Bathroom	4.14 m ²
11	Master Bedroom	28.68 m ²
12	Stairs	4.51 m ²



block 07



block 03

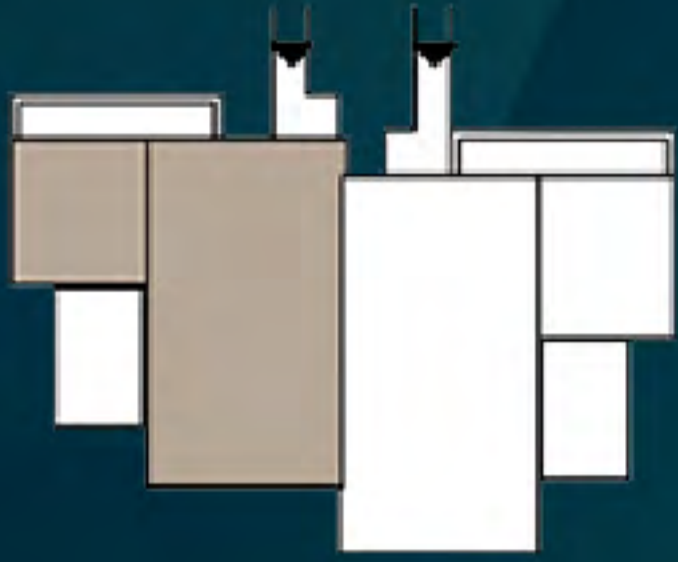


block 02



C 1 TYPE

3 + 1



Block 15



Block 14S



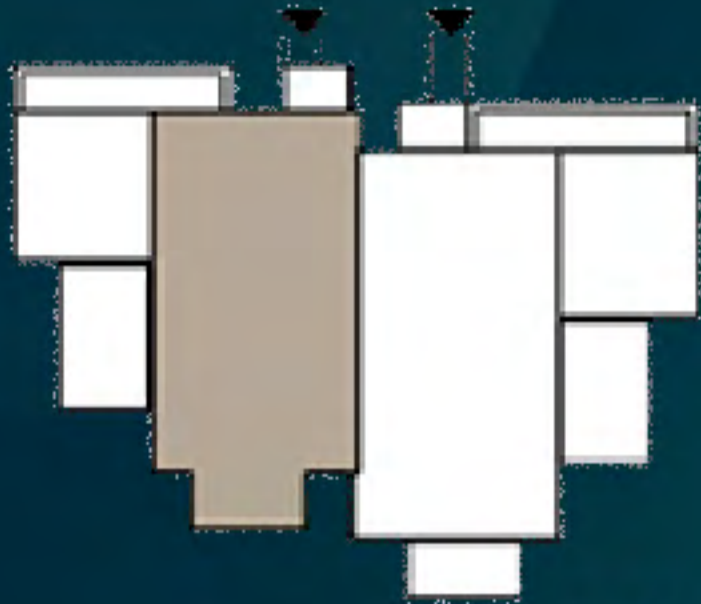
Block 14



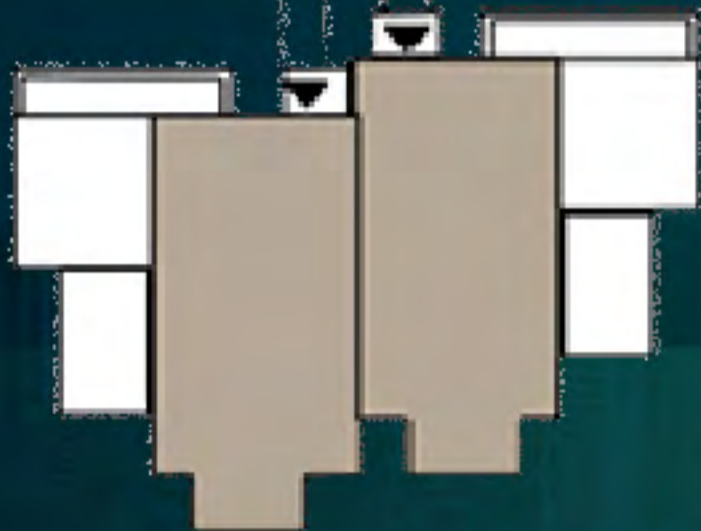
1	Hol	8.90 m ²
2	Müştemilat	41.71 m ²
3	Mutfak	12.24 m ²
4	Depo	8.01 m ²
5	Depo	3.33 m ²
6	Teknik Oda	5.00 m ²

C 1 TYPE

3 + 1



Block 15



Block 14S



Block 14



7	Rüzgarlık	3.33 m ²
8	Hol	9.80 m ²
9	Salon	12.12 m ²
10	Oda	8.68m ²
11	E. Yatak Odası	21.06 m ²
12	E. Banyo	3.93 m ²
13	Banyo	4.21 m ²
14	Merdiven	5.35 m ²

G TYPE

4 + 2

1	Hol	14.73 m ²
2	Müştemilat	41.82 m ²
3	Mutfak	10.61 m ²
4	Depo Depo	12.55 m ²
5	Servis Holü	14.04 m ²
6	Teknik Oda	4.20 m ²
7	Depo	4.40 m ²
8	Depo	23.64 m ²
9	Tesisat Odası	9.36 m ²



Block 12



Block 12S



G TYPE
4 + 2

10	Rüzgarlık	2.98 m ²
11	Hol	13.89 m ²
12	E. Yatak Odası	24.24 m ²
13	Soyunma O.	5.71 m ²
14	E. Banyo	4.52 m ²
15	Yatak Odası	16.67 m ²
16	Yatak Odası	17.17 m ²
17	Salon	29.79 m ²
18	Banyo	4.37 m ²
19	Merdiven	5.00 m ²



Block 12



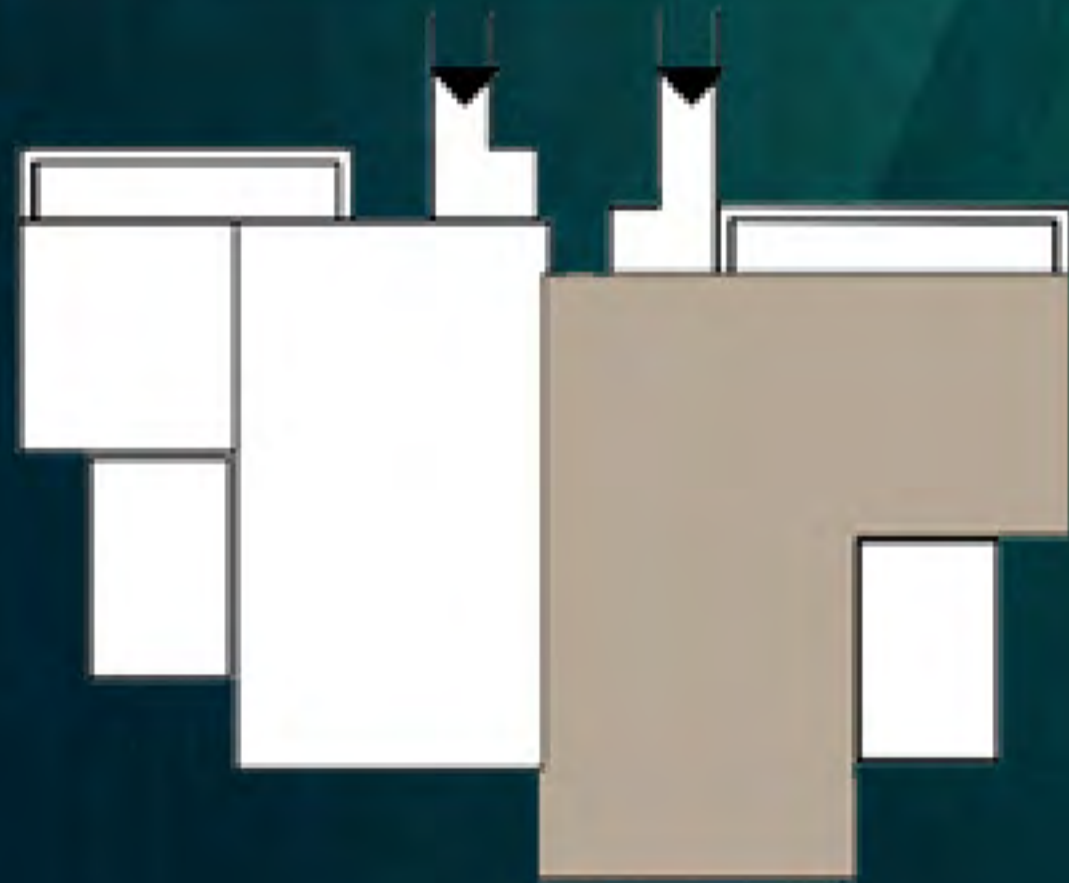
Block 12S



E1 TYPE

4 + 1

1	Hol	9.98 m ²
2	Müştemilat	42.93 m ²
3	Depo	3.04 m ²
4	Teknik Depo	7.01 m ²
5	Depo	7.59 m ²
6	Mutfak	13.89 m ²



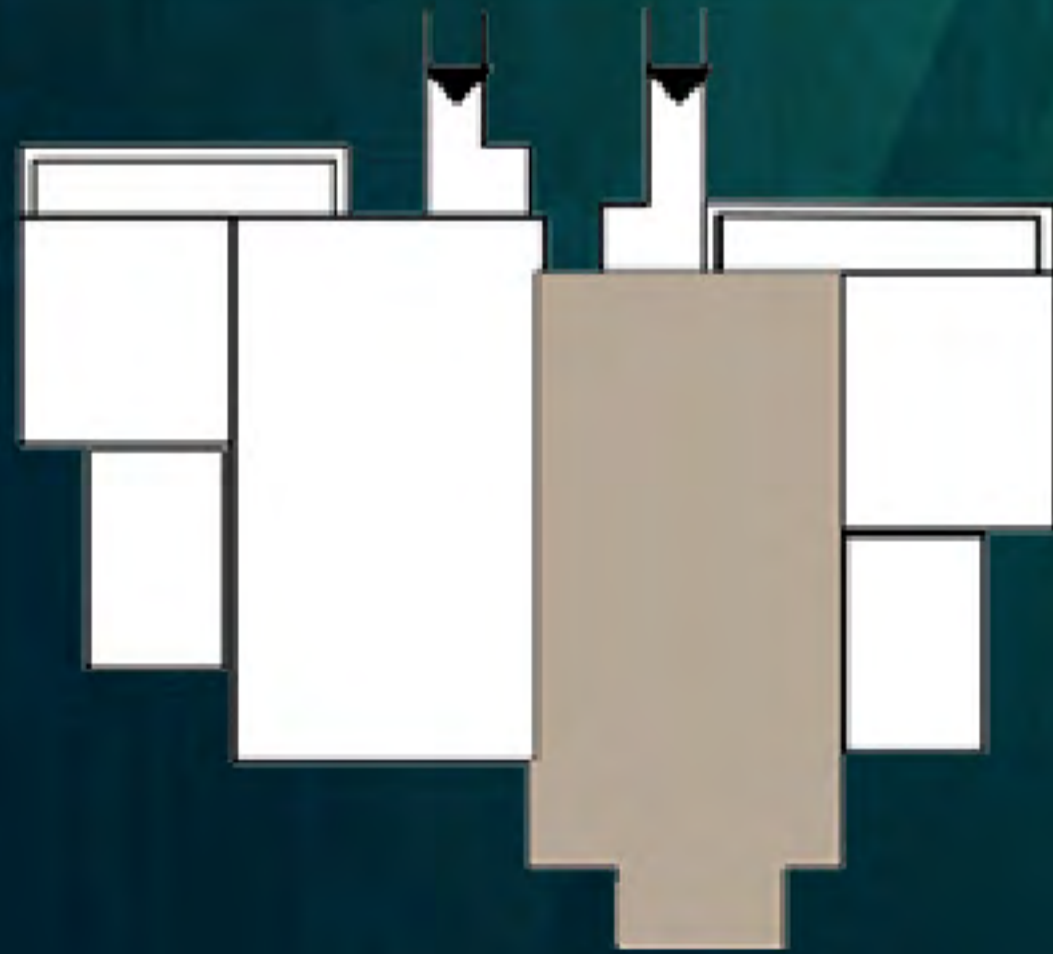
block 15



E1 TYPE

4 + 1

7	Rüzgarlık	4.34 m ²
8	Hol	11.73 m ²
9	Oda	24.11 m ²
10	Soyunma Odası	4.82 m ²
11	E. Banyo	3.39 m ²
12	Banyo	5.44 m ²
13	Oda	10.94 m ²
14	Merdiven	5.32 m ²



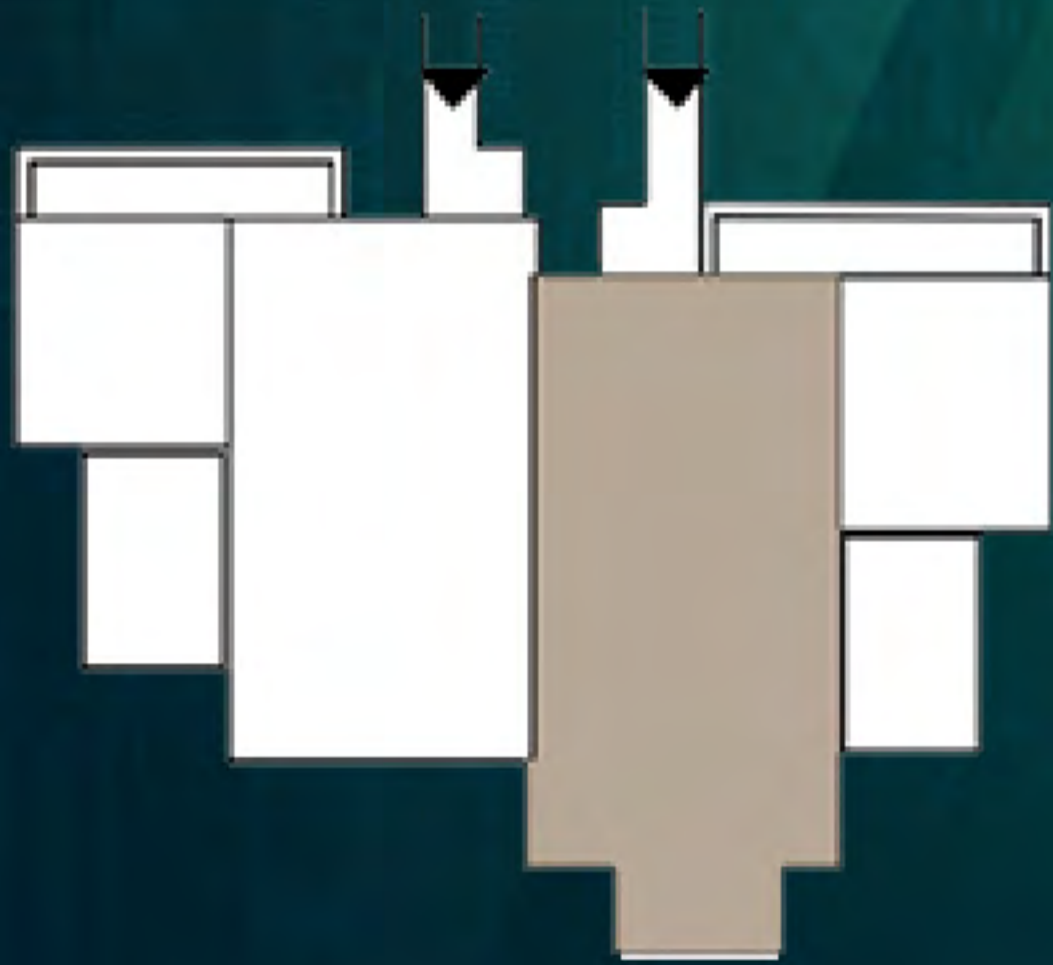
block 15



E1 TYPE

4 + 1

15	Merdiven	5.32 m ²
16	Hol	8.07 m ²
17	E. Yatak Odası	24.22 m ²
18	E. Soyunma O.	4.81 m ²
19	E. Banyo	3.39 m ²
20	Banyo	5.45 m ²
21	Salon	19.32 m ²



block 15



H TYPE

5 + 2

2	Hol	14.44 m ²
3	Hol	14.04 m ²
4	Müştemilat	50.00 m ²
5	Mutfak	13.26 m ²
6	Depo	15.19 m ²
7	Depo	20.32 m ²
8	Depo	15.66 m ²
9	Tesisat Odası	9.41 m ²
10	Teknik Oda	4.96 m ²



block 13A

H TYPE
5 + 2

11	Hol	17.31 m ²
12	Salon	30.15 m ²
13	Mutfak	13.34 m ²
14	Yatak Odası	15.13 m ²
15	Yatak Odası	17.89 m ²
16	Banyo	7.27 m ²
17	Yatak Odası	24.25 m ²
18	E. Banyo	5.13 m ²
19	Soyunma Odası	3.35 m ²
20	Merdiven	5.00 m ²

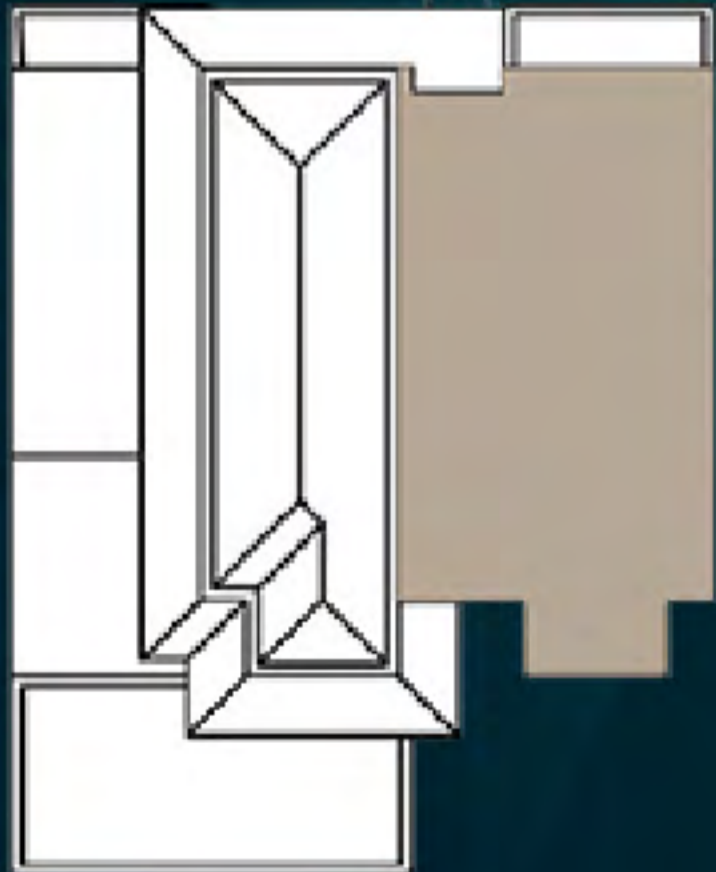


block 13A



H TYPE
5 + 2

21	Merdiven	4.74 m ²
22	Hol	3.14 m ²
23	E. Yatak Odası	35.74 m ²
24	E. Soyunma O.	7.39 m ²
25	E. WC	2.42 m ²
26	Duş	2.10 m ²
27	Banyo	11.43 m ²



block 13A



About

Us

Right Home is a leading company specializing in real estate consultancy and brokerage.

We help buyers **to buy** and sellers **to sell**.

We provide luxury apartments, smart homes, elegantly designed offices, modern constructions and all consultancy services.

Our head office located in **Istanbul**, Turkey.

righthome
real estate consultancy

 righthome_tr
righthome_tr
righthome
righthometr
+90 212 573 51 93
www.righthome.com.tr
info@righthome.com.tr