

RIGHT HOME

AREA

GAZIOSMANPASA

510



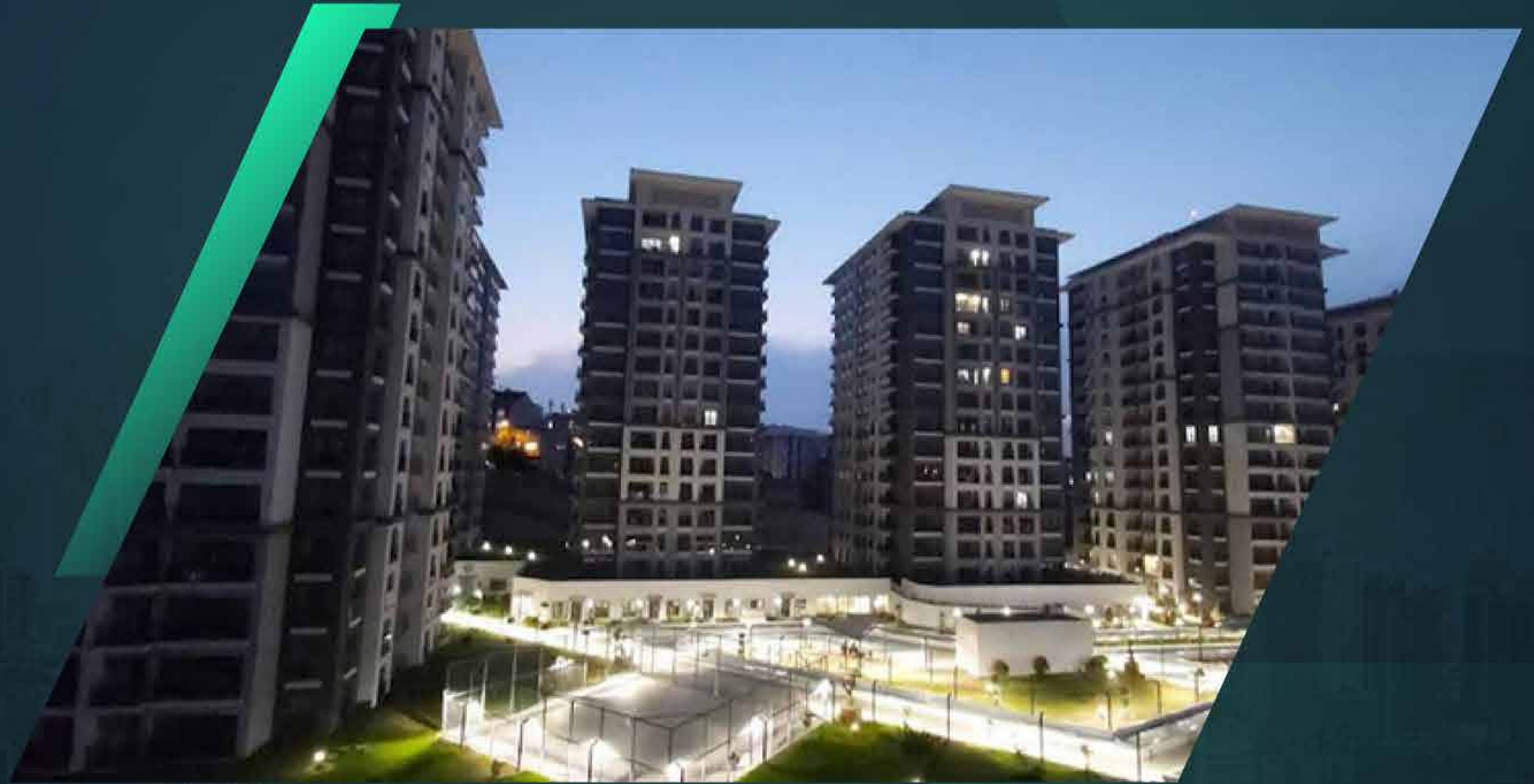
[RIGHTHOME.COM.TR](https://righthome.com.tr)

righthome
real estate consultancy

Project

Overview

47.000 m²



It is a residential project, ready for housing, close to the center of Istanbul.
The project has 47.000 sqm total land area, and 15.000 sqm green area and social facility.

Project

Overview



The project offers apartment types of 2+1, 3+1 and 4+1 duplex.

The project include 796 apartments suitable for families.

The project also includes 13 commercial unit.

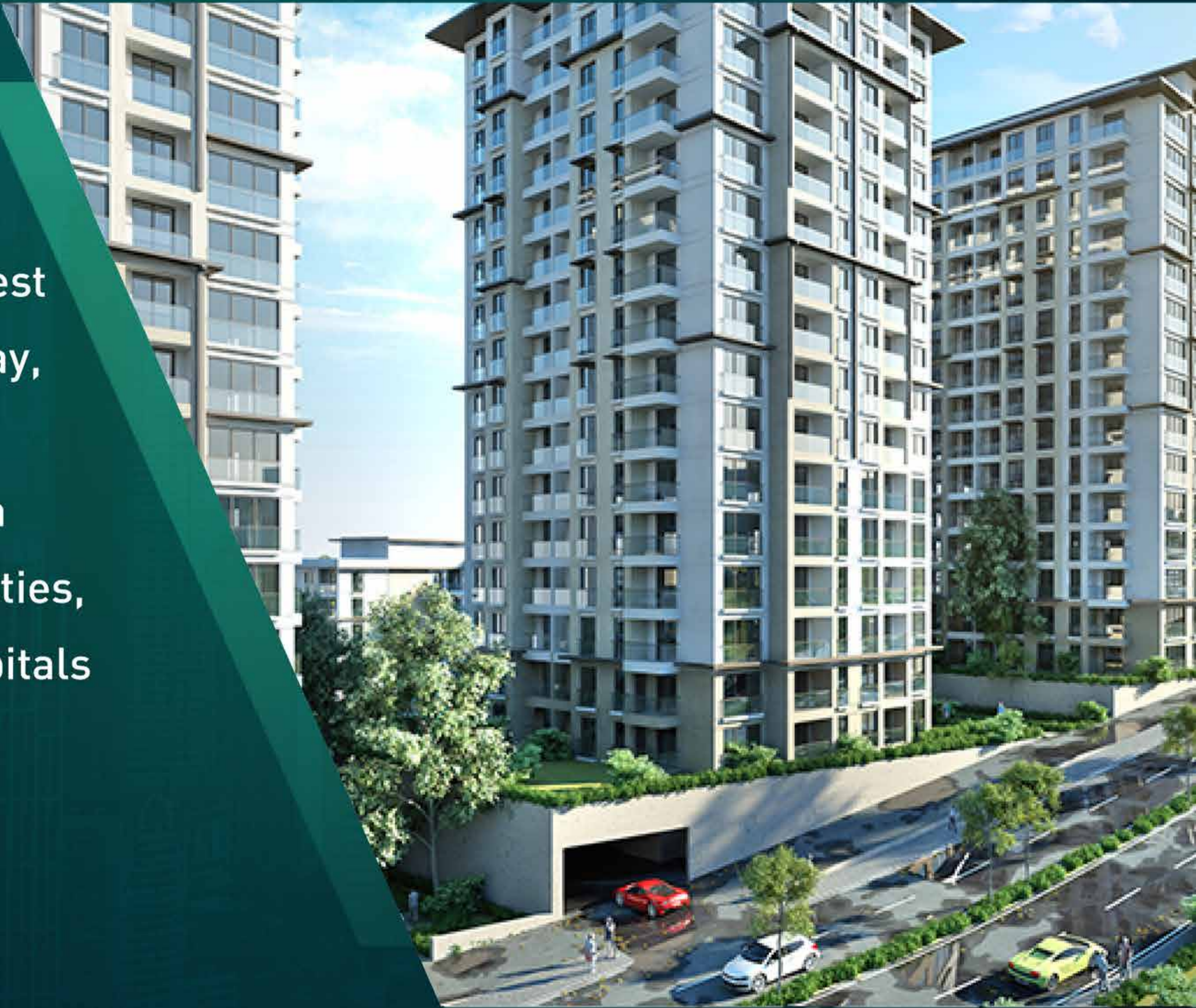
Project Site

The project located in Gaziosmanpasa area, close to the center of Istanbul.



Project Site

The project is within the shortest connection distance to Tramway, Metro, Metrobus, TEM and E5 connection road, you can reach many shopping malls, universities, international schools and hospitals that you need daily.



Project Details



**TEM
Highway**

4
Km

**E5
Highway**

7
Km

Sisli
7
Km

Taksim
10
Km

Bosphorus Bridge

16
Km

Project

Features



Garden



Elevator



Play-grounds



Gym



Swimming Pool



Sauna



Parking



Security



Available Transportation



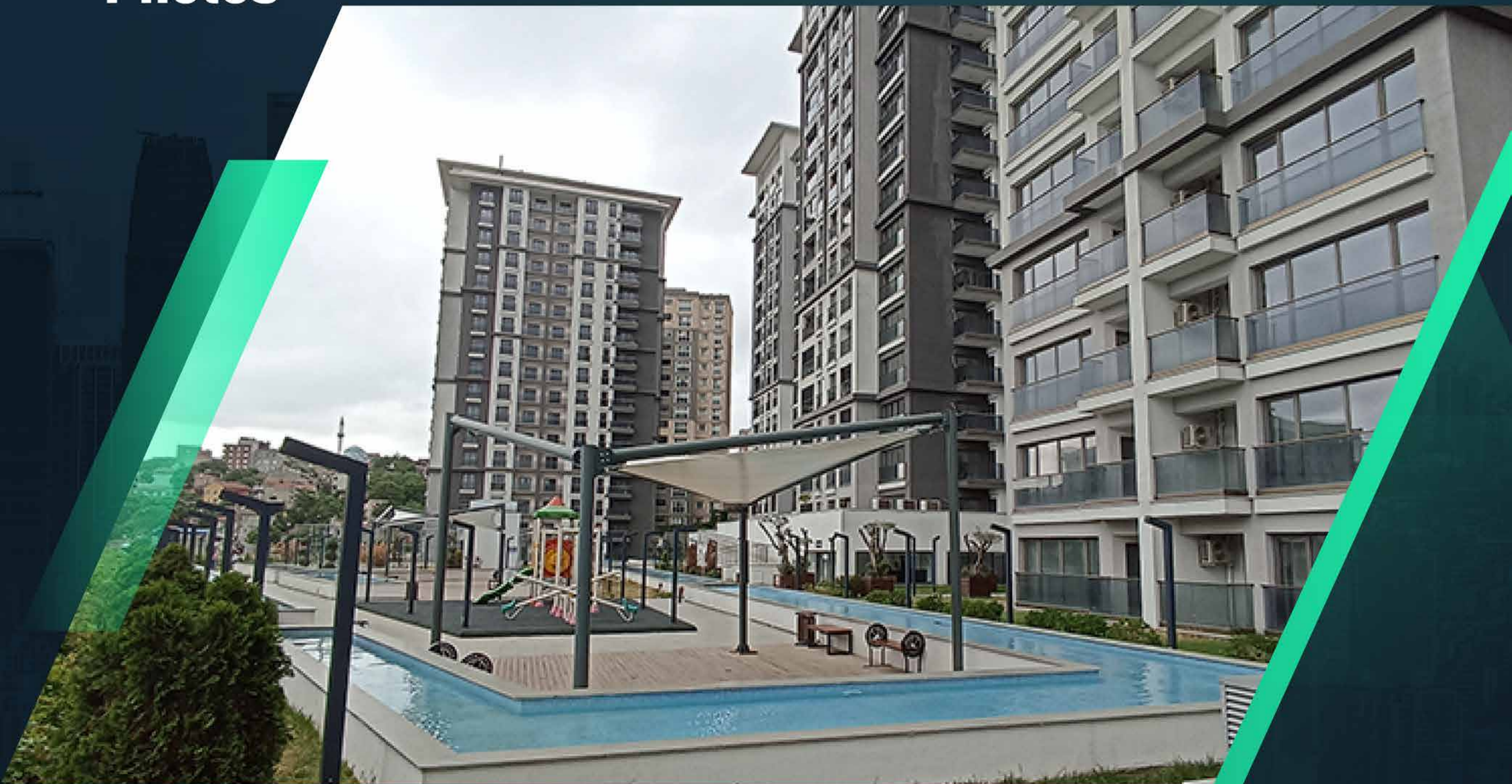
Turkish Bath



Restorant And Cafe

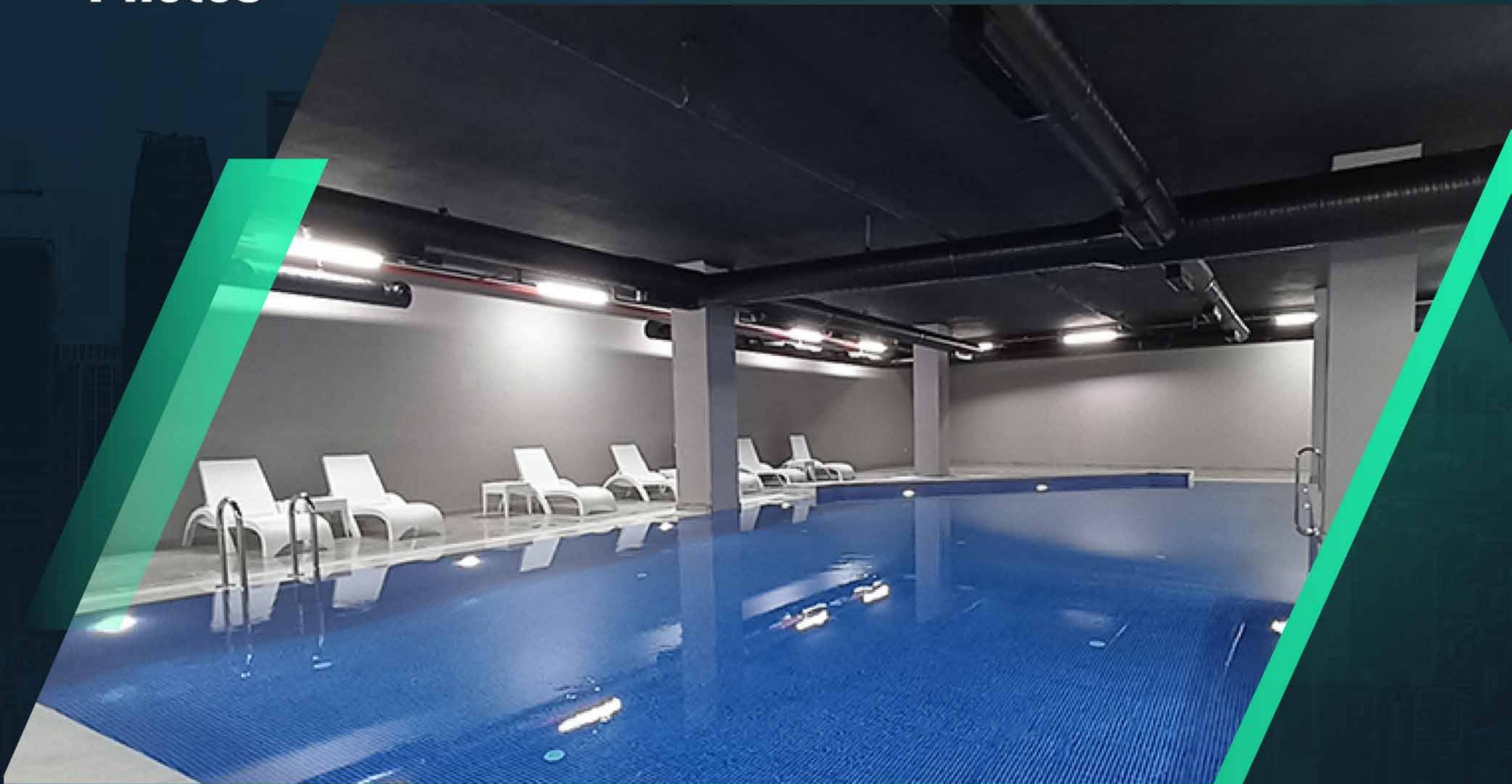


Project Photos



Project

Photos



About

Us

Right Home is a leading company specializing in real estate consultancy and brokerage.

We Help buyers buy, manage and resale.

We provide luxury apartments, smart homes, elegantly designed offices, modern constructions and all consultancy services, and customer care.

Our head office is located in **İstanbul**, Turkey.

righthome
real estate consultancy

 righthome_tr
righthome_tr
righthome
righthometr
+90 212 573 51 93
www.righthome.com.tr
info@righthome.com.tr