

RIGHT HOME

AREA
BAHCELIEVLER

093



Project Overview



Project area
210.782 M²

The project was built on a land area of 44,326 square meters, and it consists of 10 blocks that contains 1,002 apartments.

The project provides apartment options ranging from 1+1 to 4.5+1.

A new project designed by world-leading architect office SPDO Architects is coming to Istanbul's premier residential area of Bahcelievler, which is known for its unique culture and lifestyle.

Project

Overview

Although located in the city centre, its beautiful green gardens are the ideal place for your children to enjoy playing in the great outdoors.

The project's aim is that each day when you return home, you will experience the same joy you felt when you first moved in, because we have designed a home where you and your loved ones will enjoy living for many years to come.

To be in touch with nature right in the heart of the city and to smell freshly cut grass the moment you open your door is something that would make anyone happy.



Project

Overview

This is why the 210.782 sqm of the project only has 7.529 sqm dedicated to commercial space and has 40.000 sqm of landscaped areas.

The project contains 882 residences, and more than 19 commercial units.

The title deed is ready and the apartments are ready for immediate housing.



Project Site

The project located on the European side of Istanbul, in Bahcelievler district, one of the fastest growing areas in Istanbul.

The project located at an important location in Istanbul where the flow of business meets the flow of life.

The project located near to many health and educational institutions and shopping centers that can meet all your needs.

The distinctive location of the project next to Ataturk Airport, E5 Highway, and it is easy accessible by metro and metrobus.

The project is close to all city links and transport, and is near to the E5 and the Metrobus station, as well as being walking distance from the tramway.

Just a short distance away are the TEM, 15 July Martyr's Bridge and the Golden Horn Bridge.



Project's Features



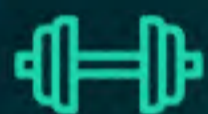
Garden



Elevator



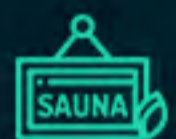
Play-
grounds



Gym



Swimming
Pool



Sauna



Parking



Security



Project Site

Ataturk
Airport

15

Minutes

Istanbul New
Airport

40

Minutes

E5
Highway

10

Minutes

Metrobus

10

Minutes



Project's
Photos



Project's
Photos



Project's
Photos



Project's
Photos



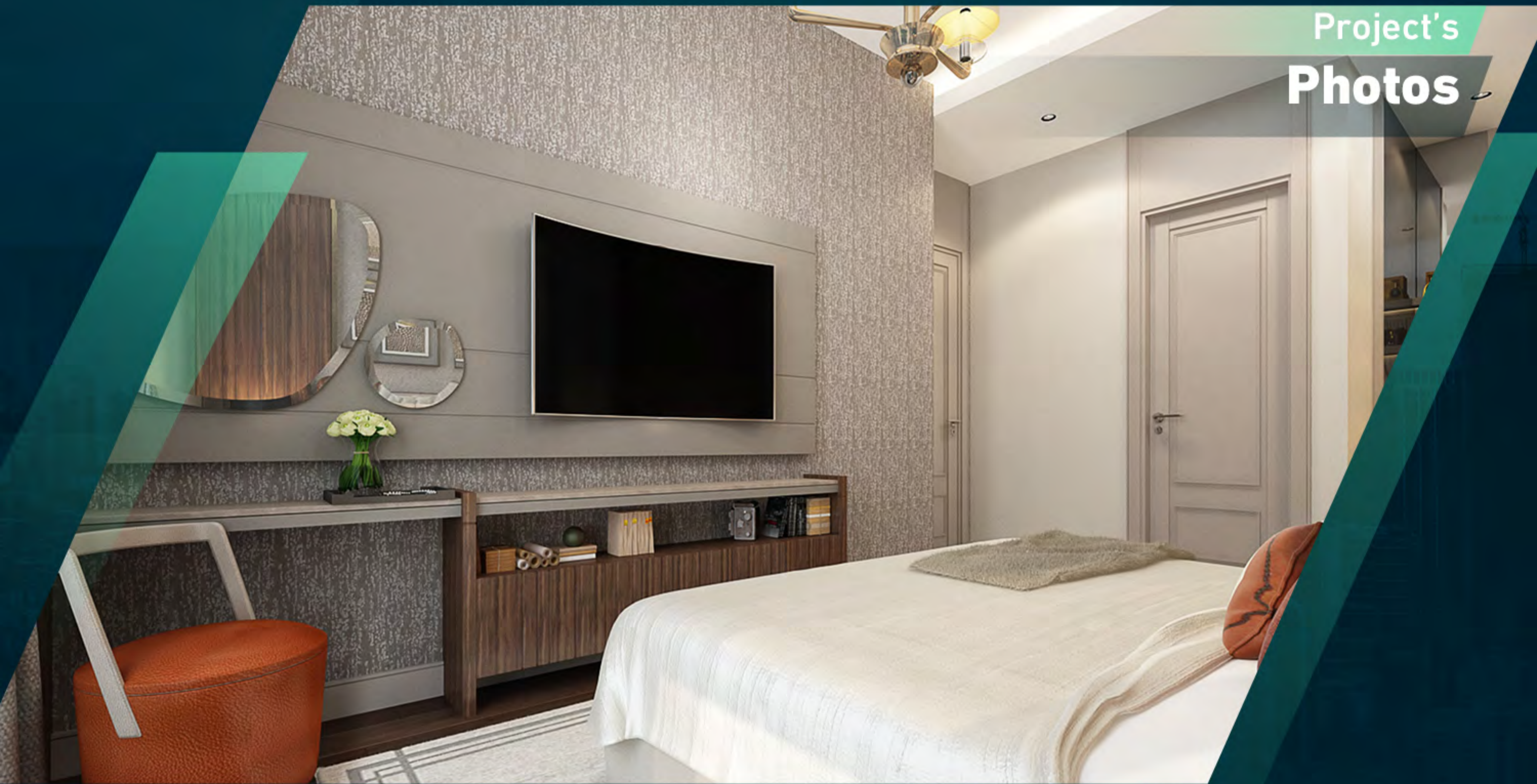
Project's
Photos



Project's
Photos



Project's
Photos



Project's
Photos



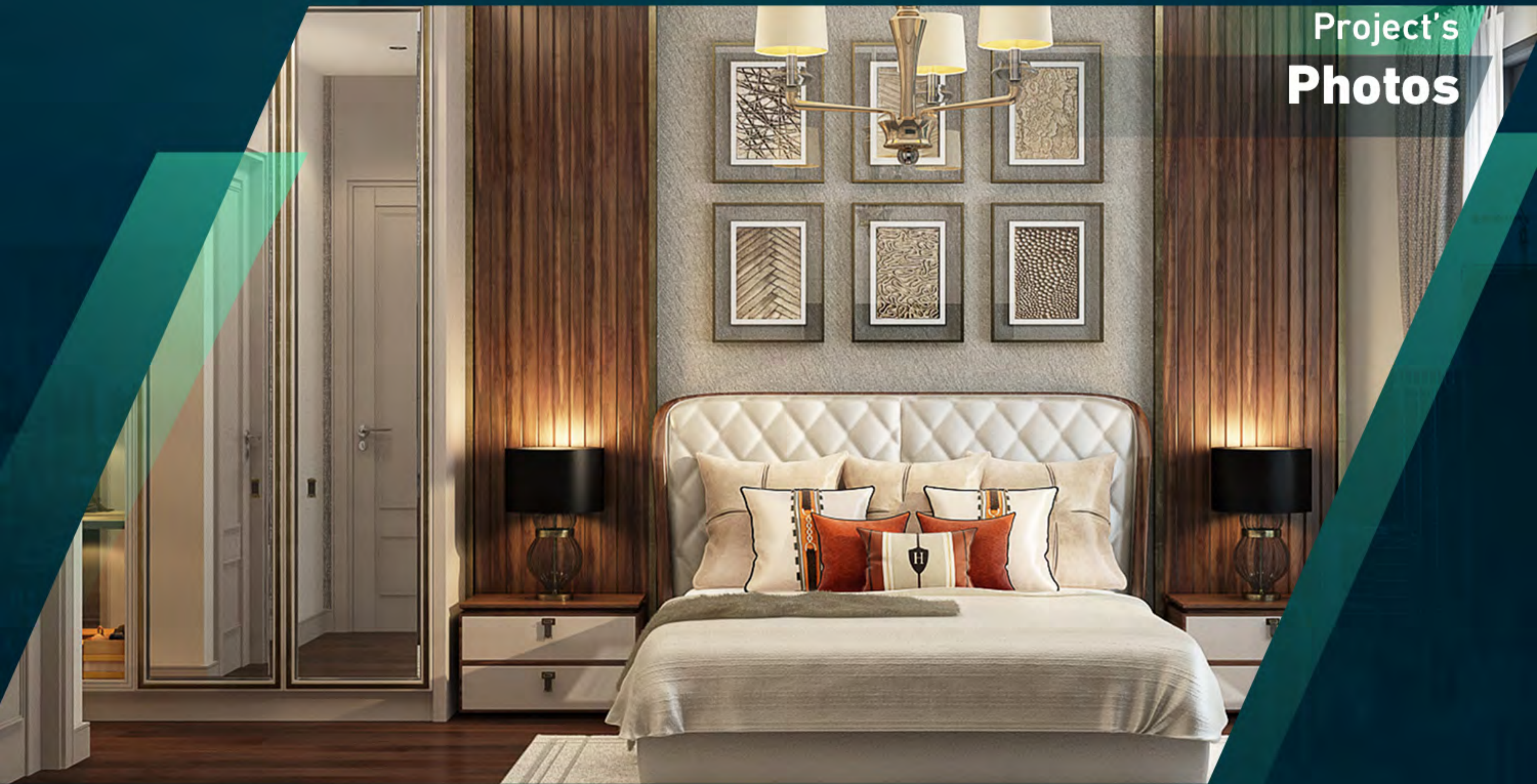
Project's
Photos



Project's
Photos



Project's
Photos



Project's
Photos



Project's
Photos



Project's
Photos



Project's
Photos



About

Us

Right Home is a leading company specializing in real estate consultancy and brokerage.

We help buyers **to buy** and sellers **to sell**.

We provide luxury apartments, smart homes, elegantly designed offices, modern constructions and all consultancy services.

Our head office located in **Istanbul**, Turkey.

righthome
real estate consultancy

 righthome_tr
righthome_tr
righthome
righthometr
+90 212 573 51 93
www.righthome.com.tr
info@righthome.com.tr