

RIGHT HOME

417

AREA

BAGCILAR



[RIGHTHOME.COM.TR](https://righthome.com.tr)

righthome
real estate consultancy

Project Overview



Project area
1.700 M²

A residential and investment project under construction in Bagcilar, near Basin Express Street, the business and trade center.

The project was developed under the supervision and experience of one of the largest construction companies in Turkey, and it provides a view for those who want it, and a garden for those who want it, with its well-planned design.

Project

Overview

The project is built on a land with a total area of 1.700 square meters, which is divided as follows: 1.200 square meters of construction area and 500 square meters of green spaces.

The project is under construction and the delivery date is 12/2022.

The project consists of one building with 3+1 apartment system, with areas starting from 196 square meters and up to 392 square meters, and it includes 50 apartments with open views on both sides.

On each floor there are only 4 apartments to allow the residents to enjoy complete comfort and tranquility.

The project includes an indoor two-floors underground car park with a private elevator from outside the project that allows cars to go down to the garage directly.



Project Overview

This project allows you to realize your dreams with its functional architecture and spacious large rooms.

Aesthetics and quality combine with interior design concepts in these apartments.

Spacious and well-planned kitchens, spacious rooms, refined taste and advanced design approach add value to your home along with quality of life.

After leaving your home, you can walk to malls and metro within minutes.



Project Site

The project is located on the European side of Istanbul in Mahmutbey district in Bagcilar area.

The distinctive location of the project near Basin Express Road and basic services.

The project is constructed at an easy access point to the TEM motorway, the E5 highway and the airport.

The project will save you time spent in traffic with its privileged location.

Basin Express main road is a few hundred meters from your apartment, and the TEM motorway is right next to you.

It is easy to access the different road options also from the project.

Mall of Istanbul and Mall 212 Outlet are just minutes away from your home.



Project Site

metro
station

1

Minutes

Istanbul
Airport

25

Minutes

Mall of Istanbul
Mall

3

Minutes

Ataturk
Airport

5

Minutes

Hagia Sophia
Mosque

15

Minutes

Yen Kapi
IDO

15

Minutes



Project's Features



Garden



Elevator



Security



Play-
grounds



Children's
Playground



Swimming
Pool



Sauna



Gym



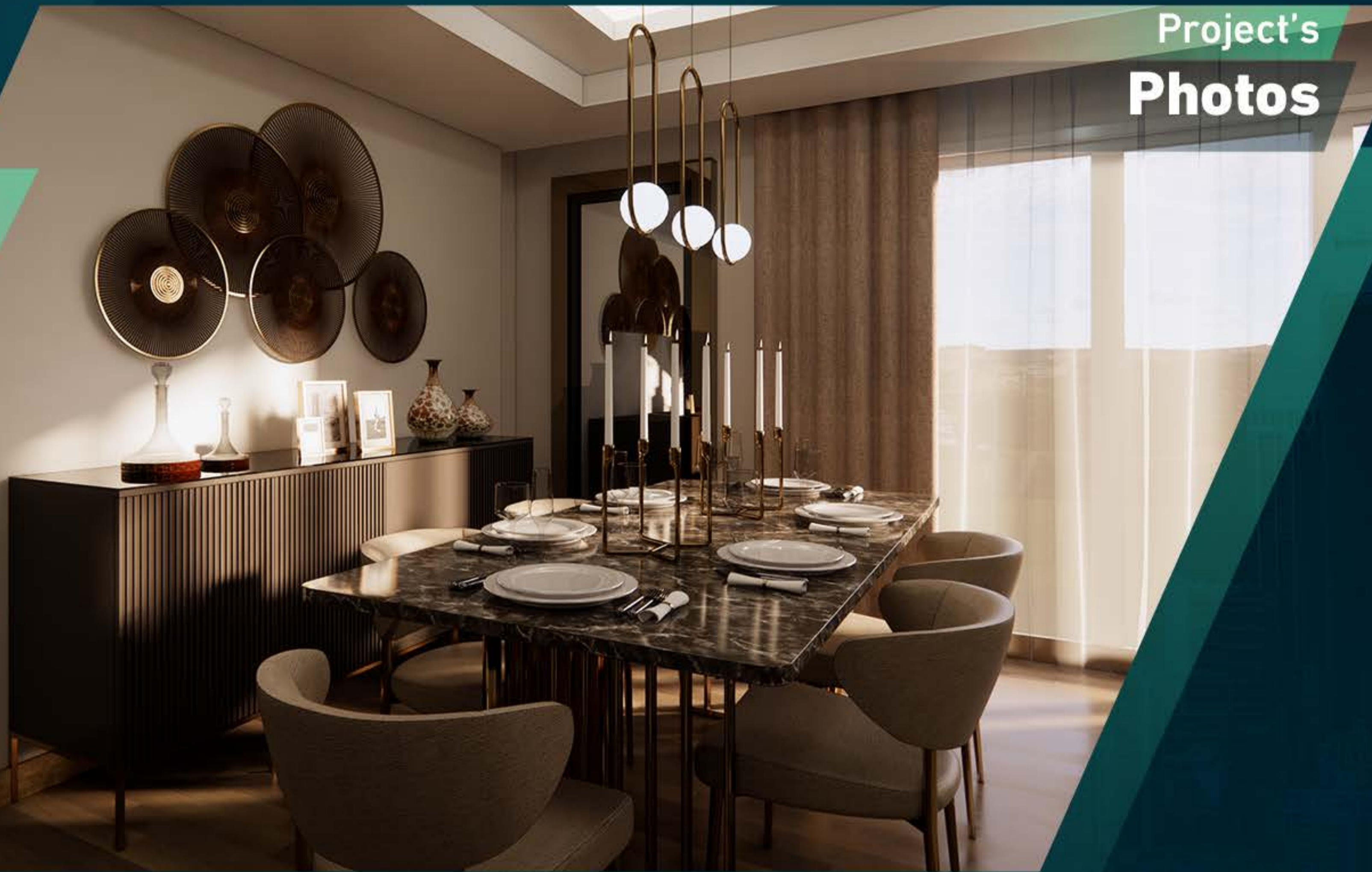
Parking



Available
Transportaion



Project's
Photos



Project's
Photos



Project's
Photos



Project's
Photos



Project's
Photos



Project's
Photos



Project's
Photos



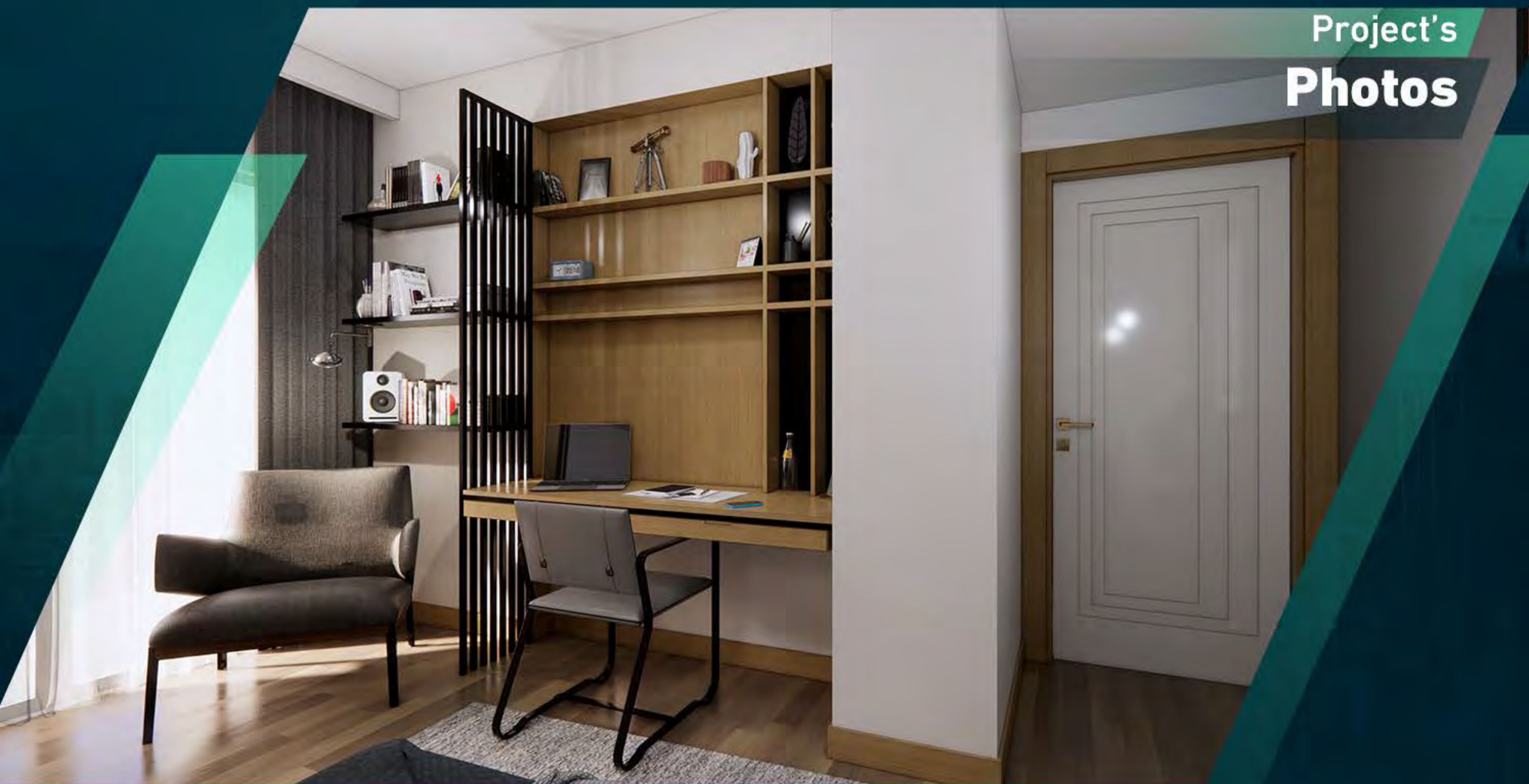
Project's
Photos



Project's
Photos



Project's
Photos



Project's
Photos



Project's
Photos



Project's
Photos



Project's
Photos



Project's
Photos



About

Us

Right Home is a leading company specializing in real estate consultancy and brokerage.

We help buyers **to buy** and sellers **to sell**.

We provide luxury apartments, smart homes, elegantly designed offices, modern constructions and all consultancy services.

Our head office located in **Istanbul**, Turkey.

righthome
real estate consultancy

 righthome_tr
righthome_tr
righthome
righthometr
+90 212 573 51 93
www.righthome.com.tr
info@righthome.com.tr