

RIGHT HOME

AREA
ATASEHIR

383



RIGHTHOME.COM.TR

righthome
real estate consultancy

Project Overview



Project area

800.000^{M²}

A ready-to-move-in residential and investment project built and developed by one of the best Turkish construction companies.

This distinctive project built on a land area of 800.000 square meters.

The project consists of 5 buildings, the number of floors ranging from 36 to 58 floors.

The total number of apartments within the project is 1605 apartments.

In this project, where there are apartment options ranging from 1+1, 2+1, 3+1, and 4+1, the spaces range from 44 to 258 square meters.

The apartment areas ranging from 56 to 404 square meters.

Project Overview

In the project, there are public facilities, social and recreational services for the residents, including 3 swimming pools, a gym in each building, in addition to the largest gym with an area of 5.000 square meters, where you are guaranteed to spend happy times with your family and friends.

This huge project includes A Plus Quality Mall as well as Fenerbahce University and Acibadem Hospital.

The value of the monthly fees in this project is between 4 to 5 liras per square meter of the apartment area.

The title deed is ready and the project is ready to move in. The project was designed by RMJM and built to LEED Gold standards. This project, with its huge and striking design, with a construction area of more than 765,000 square meters, brings a new concept to the sophisticated lifestyle in Istanbul.

This project created a new lifestyle, where residential buildings, offices, business centers, streets and lanes that bring together shopping and entertainment, cinema and sports stadiums, sustainable architectural design, energy management, and high-quality meet with modern design.



Project Site

The project is located on the Asian side of Istanbul, in Atasehir area, the business and commercial center.

Atasehir is one of the largest and most famous areas in the Asian side, as it is a tourist destination for people coming to Turkey from all over the world in order to visit its various landmarks, in addition to the reason for its popularity and importance due to the presence of the largest local and international financial centers.

Atasehir area contains a large number of shopping centers and skyscrapers, which gave it a new feature to be a center for foreign investment.

The project is characterized by its proximity to major highways and the Bosphorus Bridge, which links the Asian and European sides of Istanbul, in addition to its proximity to Sabiha International Airport.



Project Site

Sabiha
Airport

30

Minutes

E5
Highway

10

Minutes

Bosphorus
Bridge

15

Minutes

Istanbul New
Airport

50

Minutes

TEM
Road

7

Minutes



Project's Features



Security



Garage



Elevator



Garden



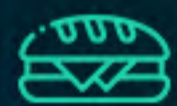
Swimming
Pool



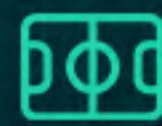
Gym



Children's
Playground



Restaurant
and Cafe



Play-
grounds



Project's
Photos



Project's
Photos

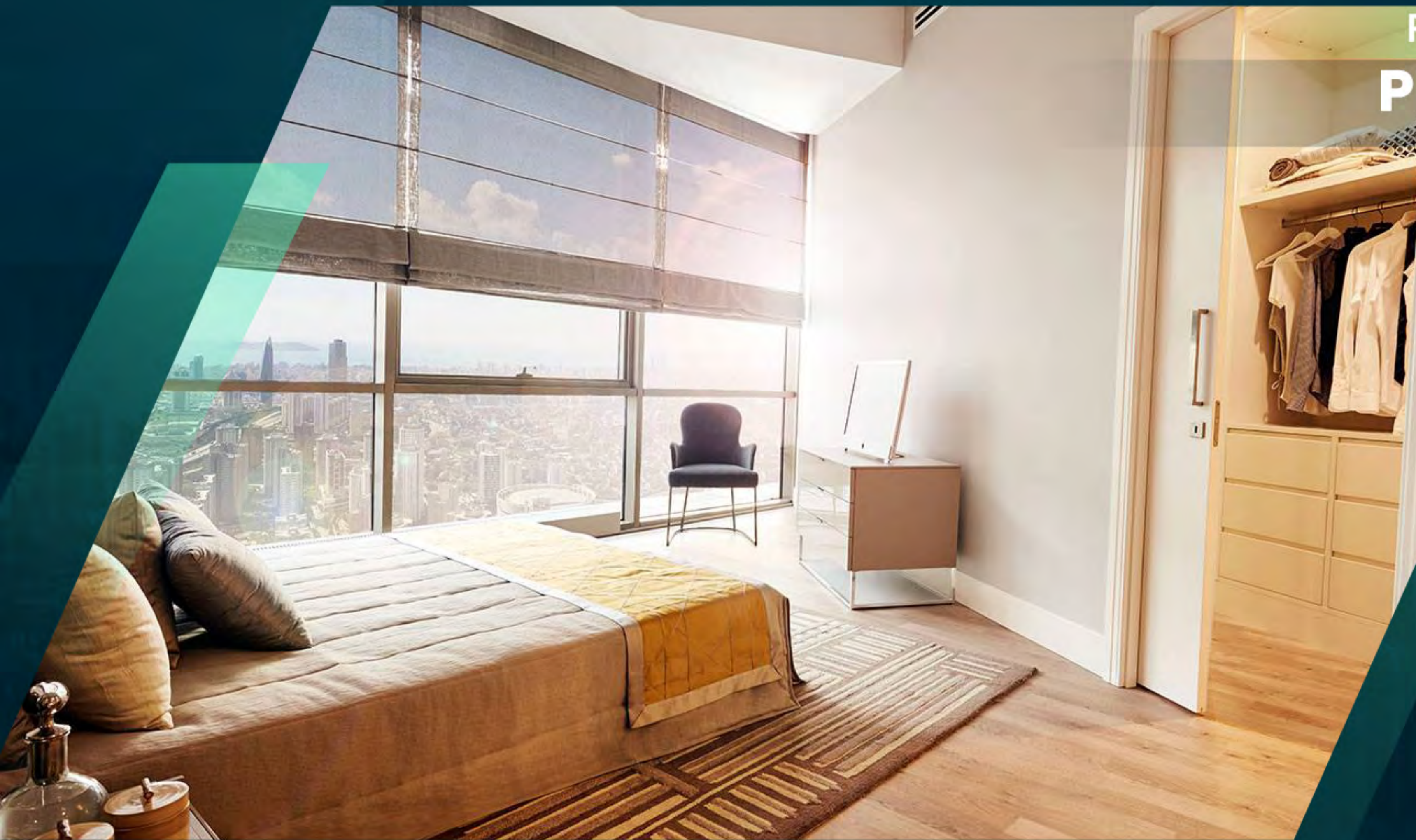


Project's
Photos





Project's
Photos



Project's
Photos



Project's
Photos



Project's
Photos







About

Us

Right Home is a leading company specializing in real estate consultancy and brokerage.

We help buyers **to buy** and sellers **to sell**.

We provide luxury apartments, smart homes, elegantly designed offices, modern constructions and all consultancy services.

Our head office located in **Istanbul**, Turkey.

righthome
real estate consultancy

 righthome_tr
righthome_tr
righthome
righthometr
+90 212 573 51 93
www.righthome.com.tr
info@righthome.com.tr

RIGHT HOME

AREA
ATASEHIR

383



RIGHTHOME.COM.TR

righthome
real estate consultancy

Project Overview



Project area

800.000^{M²}

A ready-to-move-in residential and investment project built and developed by one of the best Turkish construction companies.

This distinctive project built on a land area of 800.000 square meters.

The project consists of 5 buildings, the number of floors ranging from 36 to 58 floors.

The total number of apartments within the project is 1605 apartments.

In this project, where there are apartment options ranging from 1+1, 2+1, 3+1, and 4+1, the spaces range from 44 to 258 square meters.

The apartment areas ranging from 56 to 404 square meters.

Project Overview

In the project, there are public facilities, social and recreational services for the residents, including 3 swimming pools, a gym in each building, in addition to the largest gym with an area of 5.000 square meters, where you are guaranteed to spend happy times with your family and friends.

This huge project includes A Plus Quality Mall as well as Fenerbahce University and Acibadem Hospital.

The value of the monthly fees in this project is between 4 to 5 liras per square meter of the apartment area.

The title deed is ready and the project is ready to move in.

The project was designed by RMJM and built to LEED Gold standards.

This project, with its huge and striking design, with a construction area of more than 765,000 square meters, brings a new concept to the sophisticated lifestyle in Istanbul.

This project created a new lifestyle, where residential buildings, offices, business centers, streets and lanes that bring together shopping and entertainment, cinema and sports stadiums, sustainable architectural design, energy management, and high-quality meet with modern design.



Project Site

The project is located on the Asian side of Istanbul, in Atasehir area, the business and commercial center.

Atasehir is one of the largest and most famous areas in the Asian side, as it is a tourist destination for people coming to Turkey from all over the world in order to visit its various landmarks, in addition to the reason for its popularity and importance due to the presence of the largest local and international financial centers.

Atasehir area contains a large number of shopping centers and skyscrapers, which gave it a new feature to be a center for foreign investment.

The project is characterized by its proximity to major highways and the Bosphorus Bridge, which links the Asian and European sides of Istanbul, in addition to its proximity to Sabiha International Airport.



Project Site

Sabiha
Airport

30

Minutes

E5
Highway

10

Minutes

Bosphorus
Bridge

15

Minutes

Istanbul New
Airport

50

Minutes

TEM
Road

7

Minutes



Project's Features



Security



Garage



Elevator



Garden



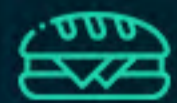
Swimming
Pool



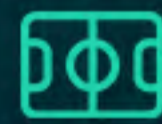
Gym



Children's
Playground



Restaurant
and Cafe



Play-
grounds



Project's
Photos



Project's
Photos

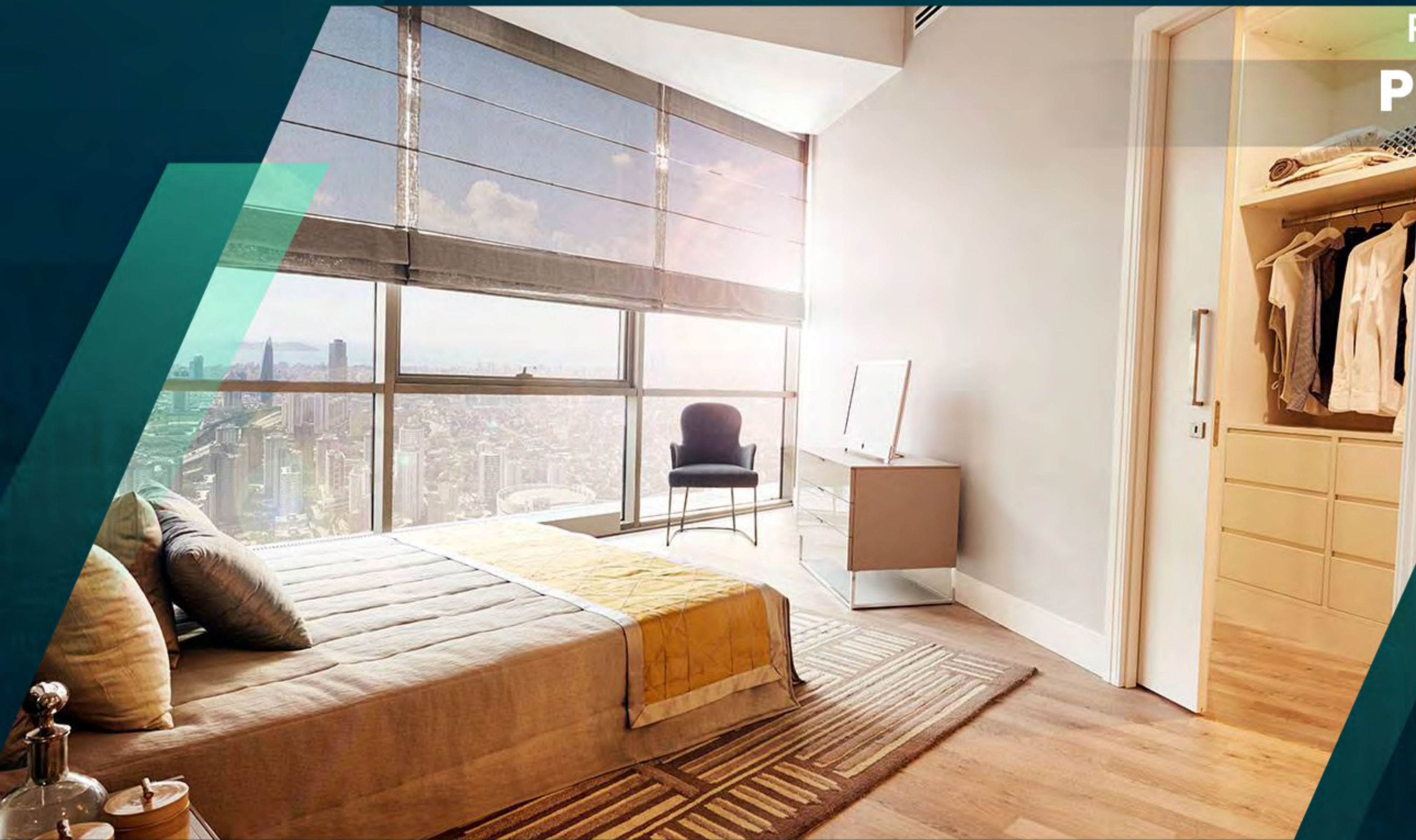


Project's
Photos





Project's
Photos



Project's
Photos



Project's
Photos



Project's
Photos







About

Us

Right Home is a leading company specializing in real estate consultancy and brokerage.

We help buyers **to buy** and sellers **to sell**.

We provide luxury apartments, smart homes, elegantly designed offices, modern constructions and all consultancy services.

Our head office located in **Istanbul**, Turkey.

righthome
real estate consultancy

 righthome_tr
righthome_tr
righthome
righthometr
+90 212 573 51 93
www.righthome.com.tr
info@righthome.com.tr