

RIGHT HOME

AREA  
KARTAL

422

RIGHTHOME.COM.TR

righthome  
real estate consultancy

Project

# Overview



It is a new project that will make a name for itself with the quality of construction.

The unique feeling of watching the view of the Islands and the pleasure of waking up every morning looking at the endless blue in Kartal, the area of the Anatolian Side that is gaining more and more value every day.

The project is rising in Kartal, Istanbul's rapidly gaining value district.

## Project

# Overview

Standing out as one of the largest business and life centers in the city, Kartal continues to be a major attraction point for investors.

35-floor tower consists of a total of 364 luxury flats from 1+1 to 3+1, most of which are 1+1.

Embracing the business world of Kartal and Maltepe, these stylish apartments add value to the present and the future, at a point where their value is increasing day by day.

It is getting ready to be one of the most eye-catching towers of the Anatolian Side with its flawless architecture that combines creativity and technology. Get ready to witness a new sense of luxury with our project!

Life is different here with different apartment options. A residence with a view, consisting of 1+1, 2+1 and 3+1 apartments and carrying luxury and comfort in every detail. In addition to all these, it offers the opportunity to earn money for its investors.



Project

## Overview

Indoor and outdoor car park, outdoor swimming pool, Turkish Bath, sauna, cafeteria and fitness center offer you the pleasure you want.

Get fit by doing sports or enjoy the weekends in the outdoor pool. The project gives you the comfort you deserve with the moments you will enjoy.

May you rest in peace because your children will play safely with 24/7 security services and playgrounds.

You have many options here to spend quality time with your family and children.

Be a happy home owner in safety and peace. Step into a pleasant and social life.



## Project Site

You will be able to get anywhere you want to go between cities or within the city easily with unlimited transportation alternatives available at your doorstep.

The project is distinguished by its location on the minibus route in the middle of the E5 motorway and the coastal road.

In this project, you will be in an area where transportation alternatives such as Marmaray,

high-speed train line and metro intersect and you will get rid of the transportation problem.

Your dream home is waiting for you within walking distance to important places like schools, hospitals, banks and pharmacies, you will not waste time to reach public transportation and you will feel the comfort of life at every moment.



## Project Site

The project located in Kartal area on the Asian side of Istanbul.

The project draws attention with its easy access and proximity to the important points of the city.

It makes your life flow much easier with its proximity to shopping malls, hospitals, Sabiha Gokcen Airport and universities.

The project located in Kartal, one of the most valuable settlement and trade centers of Istanbul with its dazzling location overlooking the islands.

The project's distinctive location near highways, metro and public transportation, which has earned it a high value and great importance in the area.



# Project Site

Maltepe Park  
Mall

**2**

Minutes

Metro  
Station

**10**

Minutes

Marmaray  
Metro

**2**

Minutes

Ikea

**5**

Minutes

Hospitals

**4**

Minutes

Canyon  
Mall

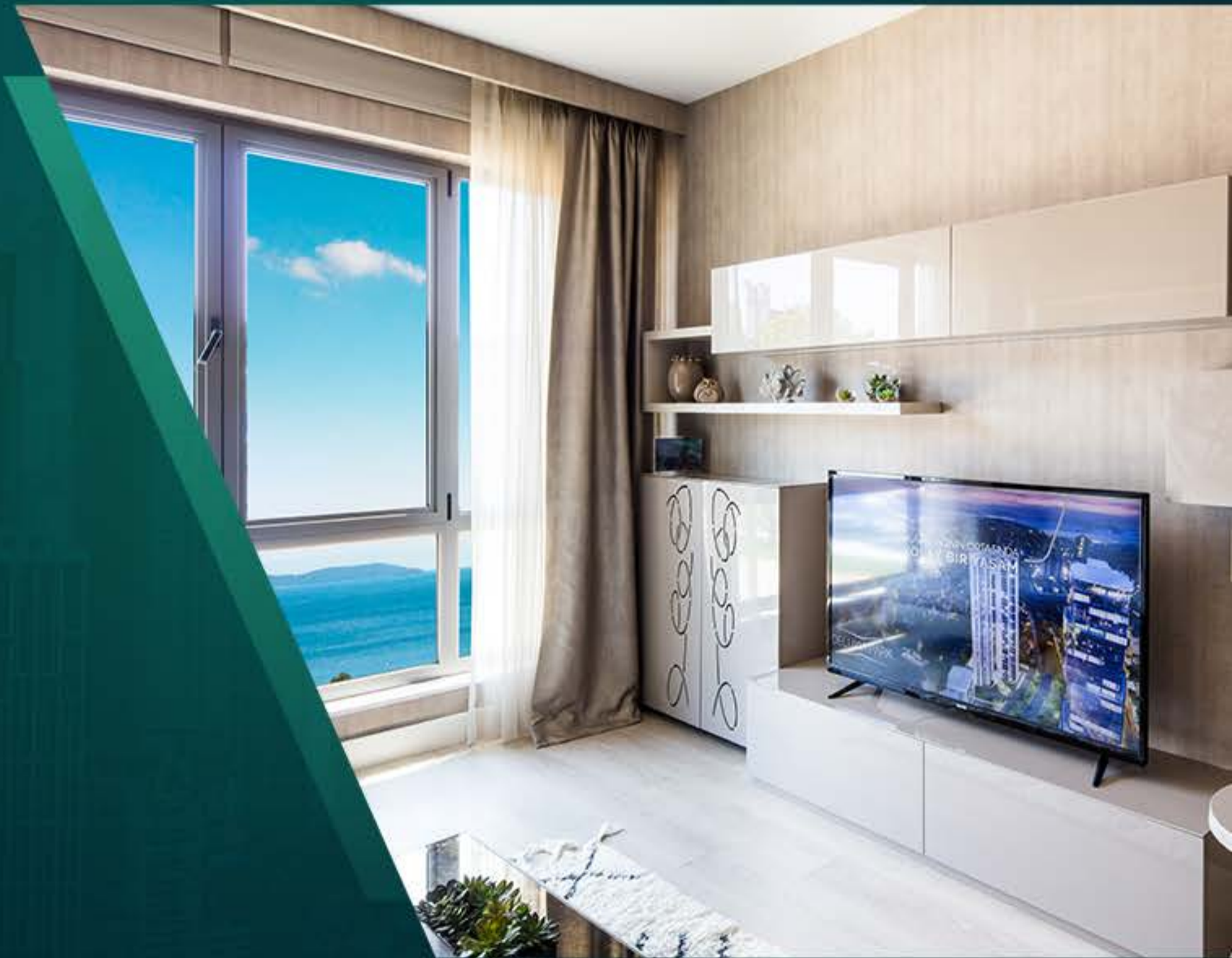
**35**

Minutes

Zorlu  
Mall

**35**

Minutes



# Project's Features



Garden



Elevator



Security



Play-  
grounds



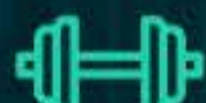
Children's  
Playground



Swimming  
Pool



Sauna



Gym



Parking



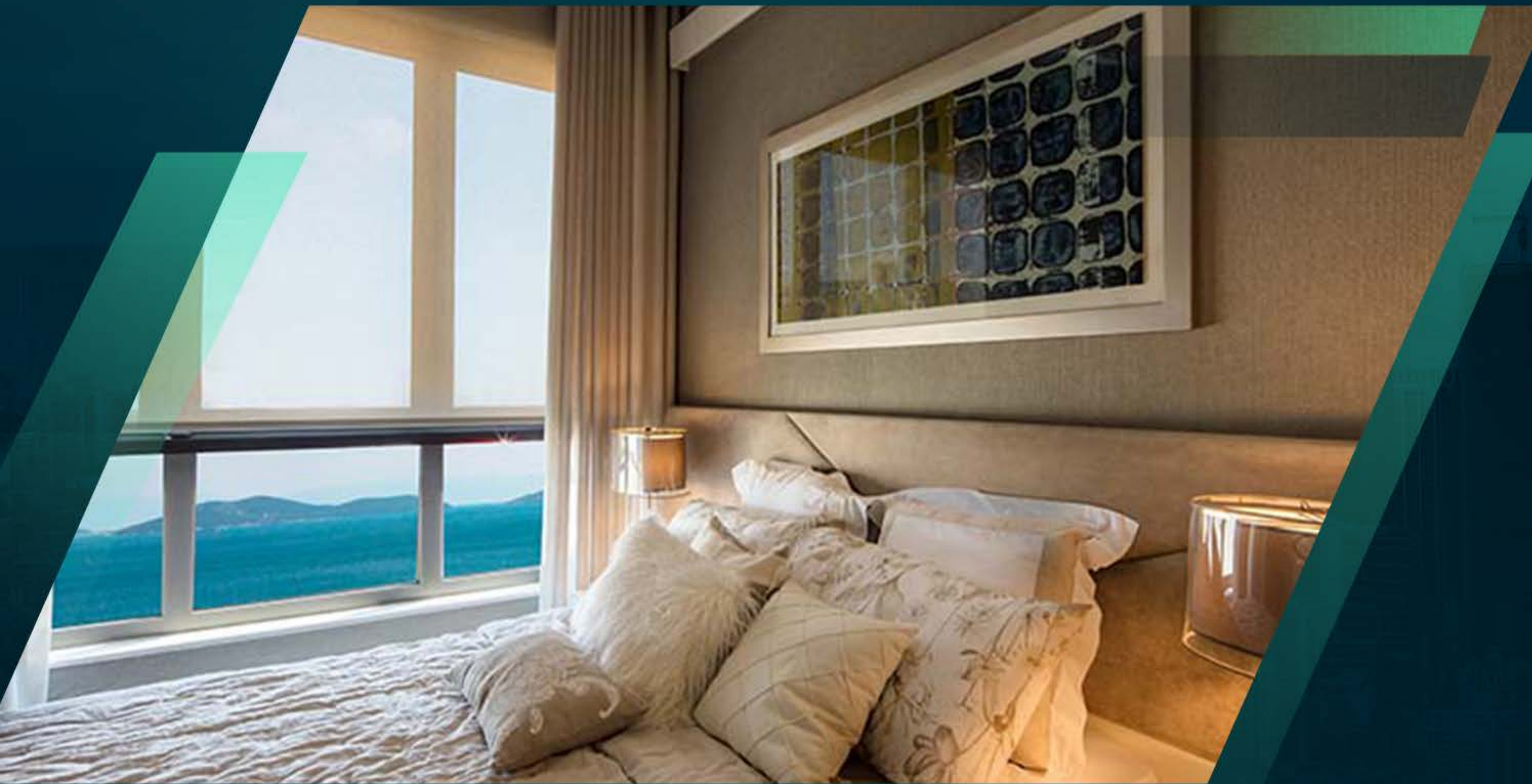
Turkish  
Bath

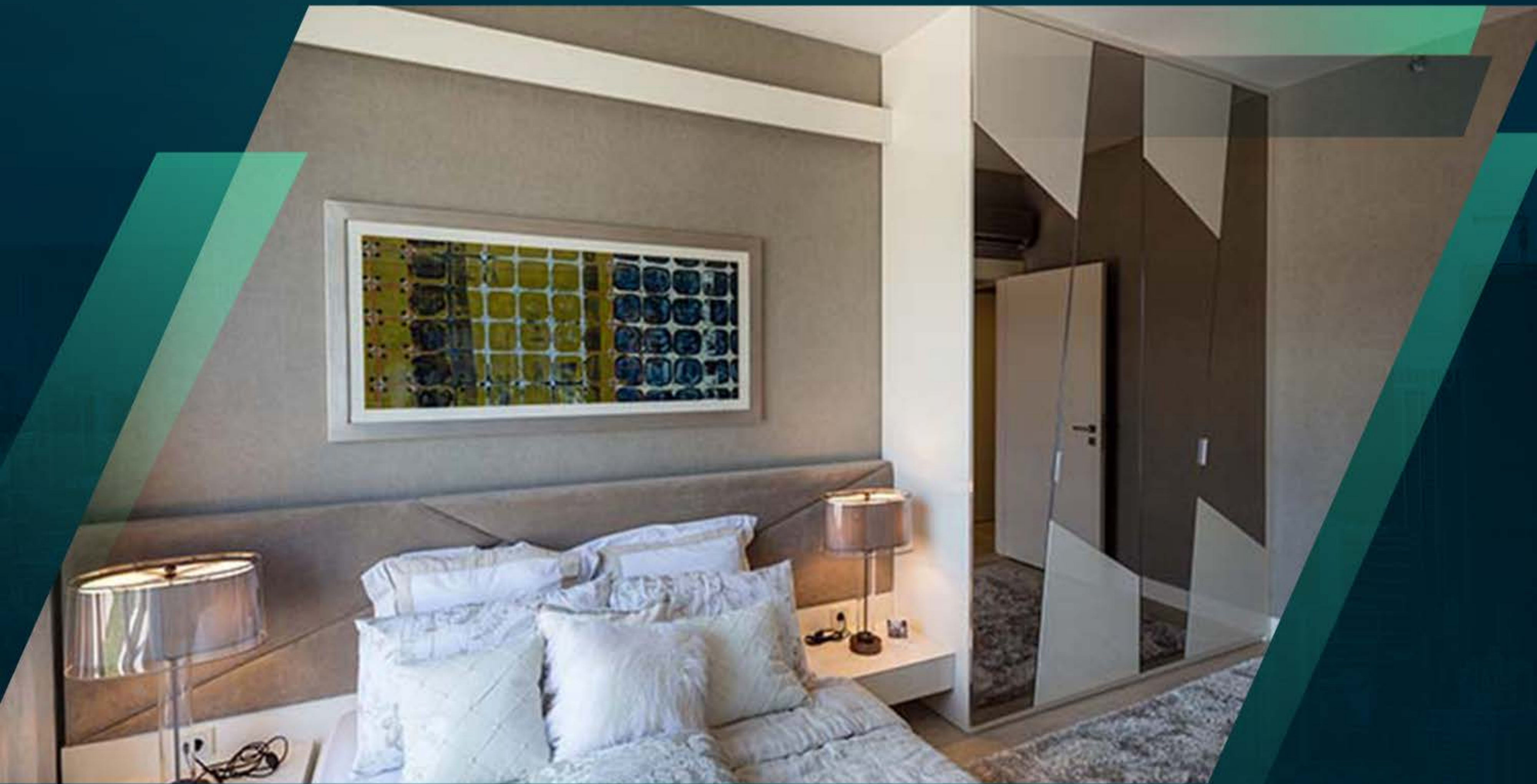


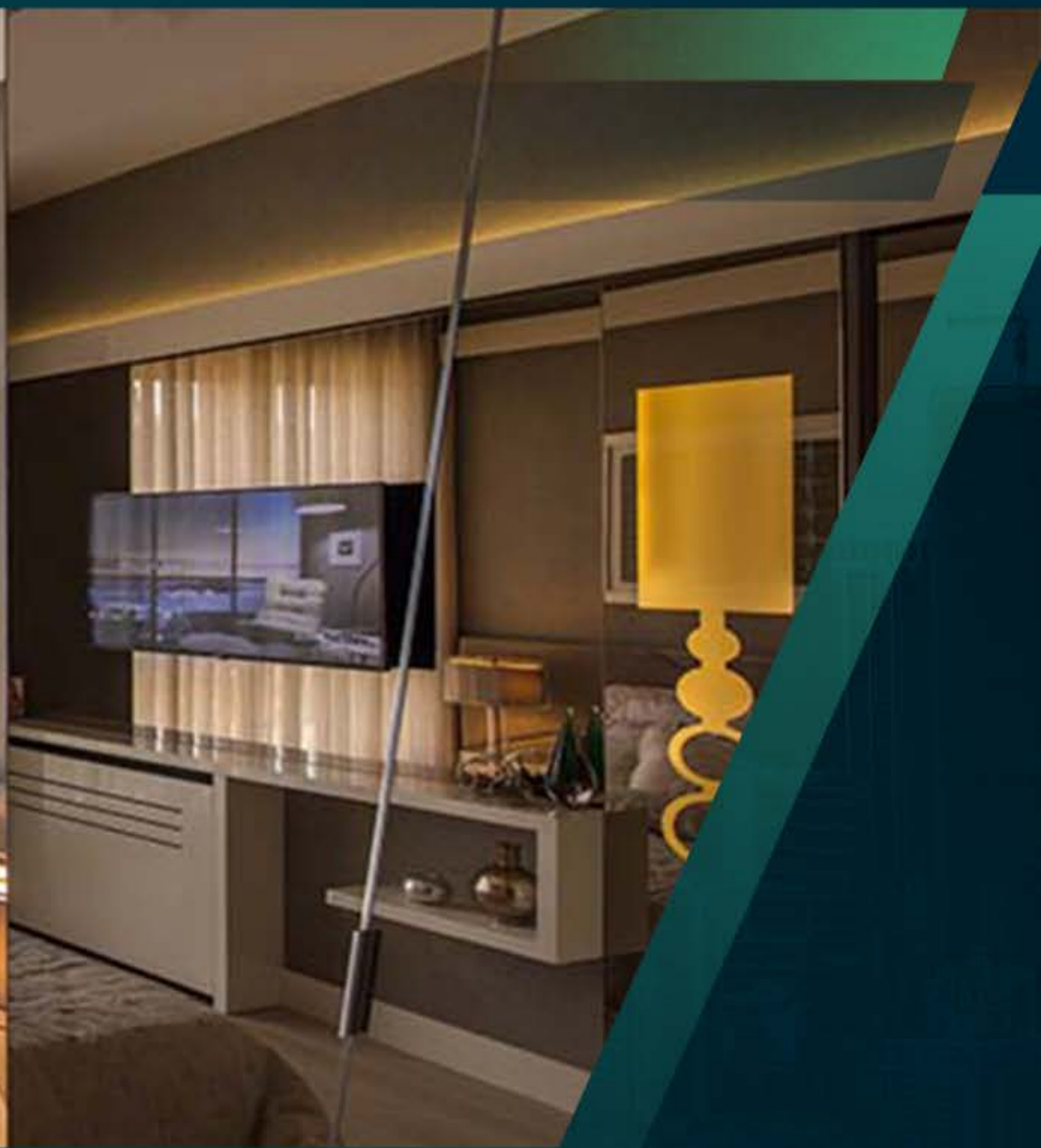






















About

Us

**Right Home** is a leading company specializing in real estate consultancy and brokerage.

We help buyers **to buy** and sellers **to sell**.

We provide luxury apartments, smart homes, elegantly designed offices, modern constructions and all consultancy services.

Our head office located in **Istanbul**, Turkey.

**righthome**  
real estate consultancy

 righthome\_tr  
 righthome\_tr  
 righthome  
 righthometr  
 +90 212 573 51 93  
 www.righthome.com.tr  
 info@righthome.com.tr