

RIGHT HOME

AREA
BEYOGLU

120



[RIGHTHOME.COM.TR](https://www.righthome.com.tr)

righthome
real estate consultancy

Project Overview



Project area
82.000 M²

It is the largest privately developed urban regeneration project in Turkey.

In this project, we are working to transform a long-time dream into reality.

The neighborhood we have been longing for is coming to life.

The good old days of Piyalepasa neighborhood are being brought back to life with the project's houses, residences, hotel, offices and a Pedistrained shopping avenue.

Project

Overview

The project is waiting its residents with options to address every kind of taste and need, offering a lifestyle in the heart of Istanbul.

Residents can choose from 760 flats to different sizes and types, ranging from 1+1 to 4+1.

There is also a choice of 190 residences ranging from studios to 1+1 and 2+1 options.

The project opens the getaway to a privileged lifestyle through its spacious windows designed to make the most of daylight, custom designed kitchen, and ceramics featured in high ceilinged flats, complete with under-floor heating system and kitchen appliances.

The covered parking lot with room for 3900 vehicle eliminates parking problems. Also, storage space for each apartment eases the lives of our residents.



Project

Overview

The covered parking lot with room for 3900 vehicle eliminates parking problems. Also, storage space for each apartment eases the lives of our residents.

Each residence in the project has a balcony reviving the much-loved balcony culture of the previous times.

Each of the houses is designed to appeal to wide range of tastes and needs and is designed to down to the last detail to ensure practical and enjoyable living.

You can enjoy a complete social life without needing to leave the compound. You are just stepping away from the walking paths, outdoor recreation areas, playgrounds, parks and garden, when you want to relax and inhale fresh air.



Project Site

The project located on Beyoglu district, on the European side of Istanbul, the center of entertainment and life.

The specila location of the project, few minutes away from Taksim square, Nisantasi, Besiktas and other lively areas in the center of Istanbul.

The project is near to Istiklal Avenue, one of the liveliest streets of Istanbul. It is also near to Karakoy, Galata Bridge and the famous Taksim Square.

Your home will be steps away from the highways and main roads in the city.

The perfect location in the investment spot in the center of Istanbul,
the increasing value for real estate.



Project Site

Taksim
Square

15

Minutes

Perpa Exhibition
Trade Centre

5

Minutes

Modern Art
Museum

24

Minutes

Dolmabahce
Palace

17

Minutes

Ataturk
Airport

35

Minutes

Sabiha
Airport

40

Minutes

Istanbul
Airport

30

Minutes



Project's Features



Garden



Elevator



Play-
grounds



Children's
Playground



Swimming
Pool



Sauna



Parking



Security



Restaurant
and Cafe



Turkish
Bath



Available
Transportaion



Gym



Project's
Photos



Project's
Photos



Project's
Photos



Project's
Photos



Project's
Photos



Project's
Photos



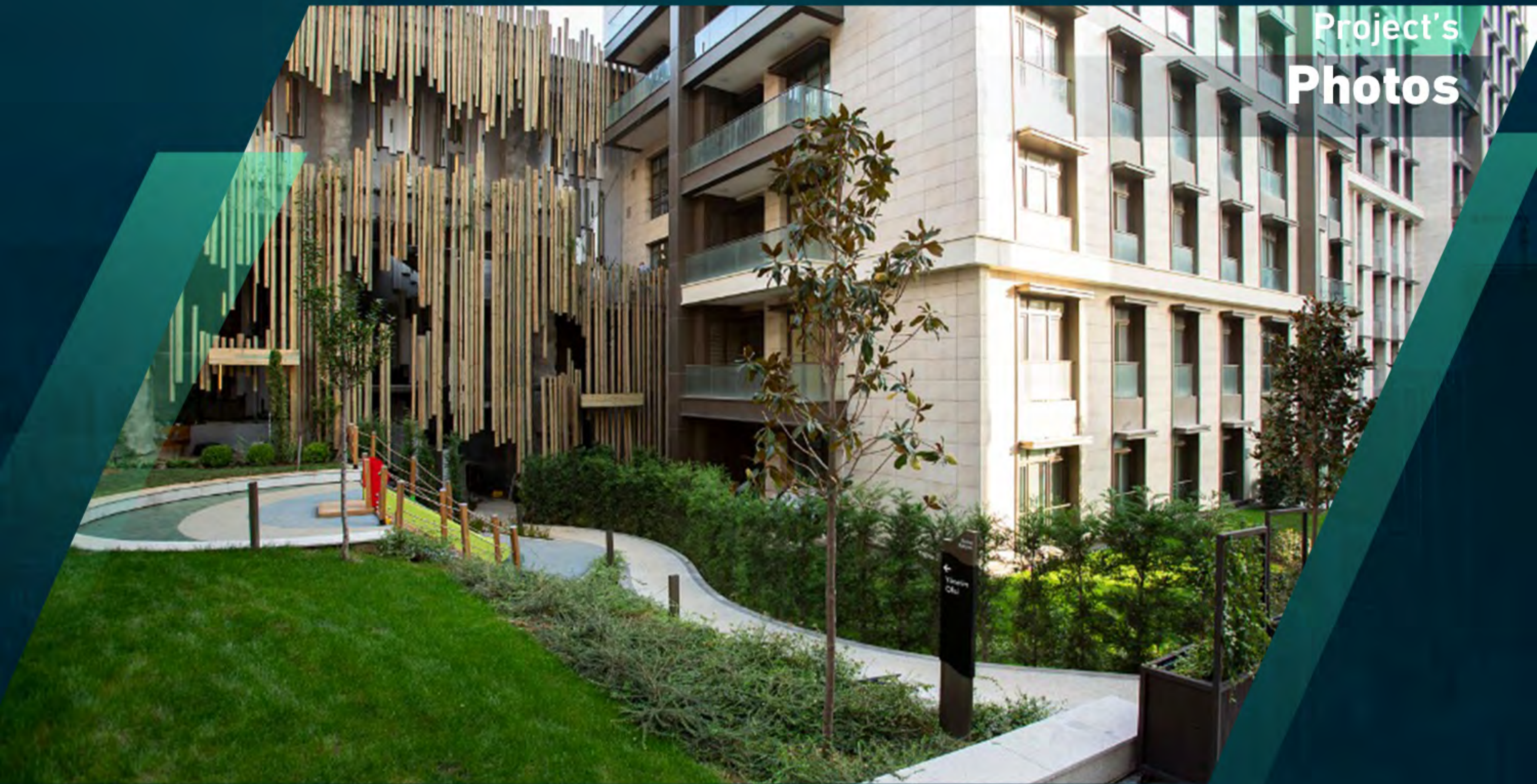
Project's
Photos



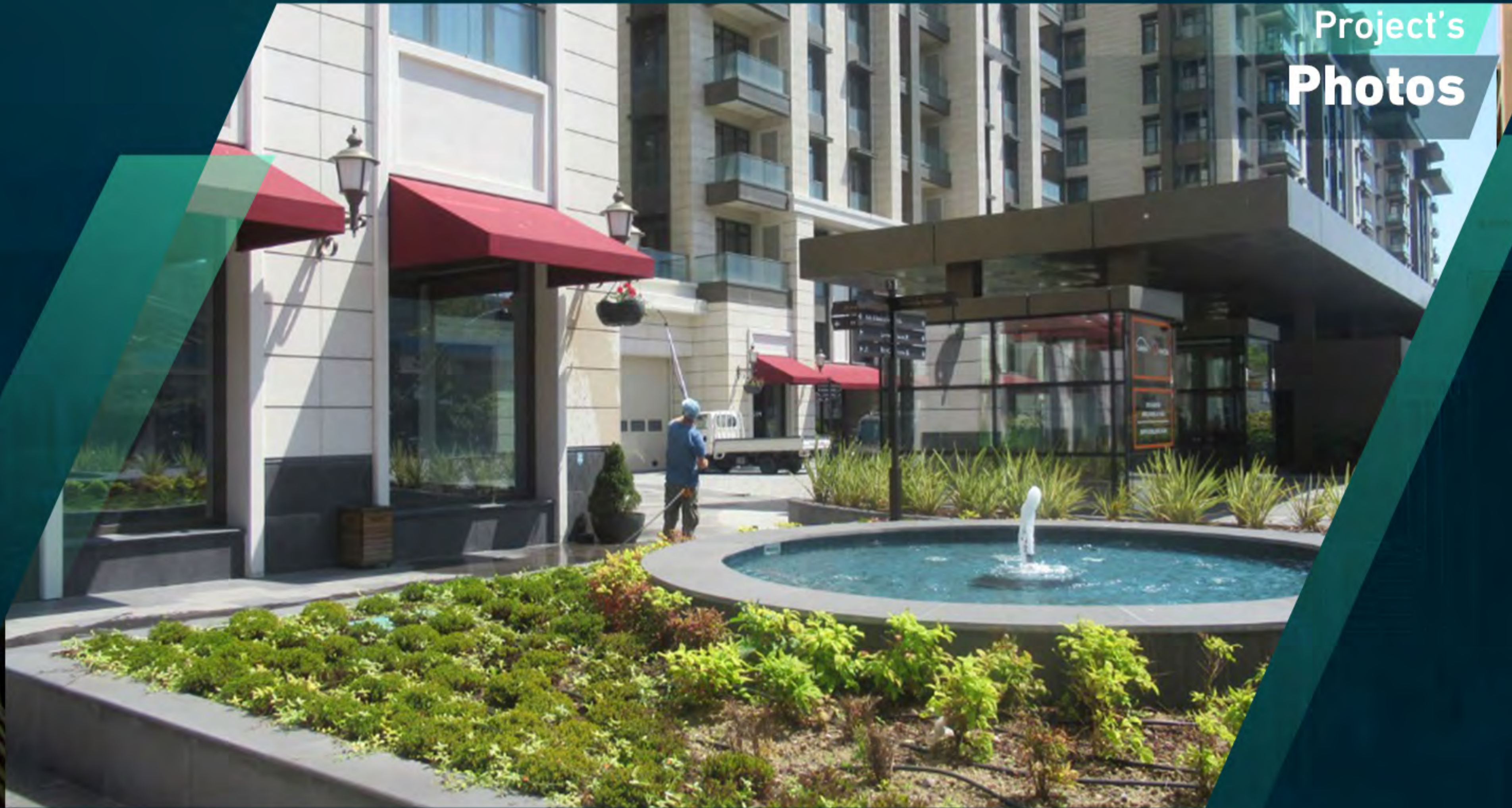
Project's
Photos



Project's
Photos



Project's
Photos



Project's
Photos



Project's
Photos



About

Us

Right Home is a leading company specializing in real estate consultancy and brokerage.

We help buyers **to buy** and sellers **to sell**.

We provide luxury apartments, smart homes, elegantly designed offices, modern constructions and all consultancy services.

Our head office located in **Istanbul**, Turkey.

righthome
real estate consultancy

 righthome_tr
righthome_tr
righthome
righthometr
+90 212 573 51 93
www.righthome.com.tr
info@righthome.com.tr