

RIGHT HOME

AREA  
SISLI

413



[RIGHTHOME.COM.TR](https://www.righthome.com.tr)

**righthome**  
real estate consultancy

## Project Overview



Project area  
**97.000** M<sup>2</sup>

A new project rises in Nisantasi, Sisli, one of the first districts that come to mind when talking about Istanbul.

It is a comprehensive project comprising residences, offices, a hotel, and a shopping mall.

Spanning 9.000 square meters, the project has a total construction site of 97.000 square meters.

## Project

# Overview

With the above-the-line and luxury design using various materials, meticulous landscaping, and vast social spaces, the project offers a modern and creative interpretation of the courtyard concept which provides an opportunity to relax and socialize in the city.

The project offers a chance to relax and socialize in the city while bringing together shopping, dining and relaxing venues, the courtyard concept is reinterpreted in a modern way.

Designed to create public meeting places out of shared spaces hidden among buildings in order to offer pedestrian access, the project has buildings around the inner courtyards with units eligible for commerce, dining, and meeting.



## Project

# Overview

The project includes a parking space for 600 vehicles.

The project contains 62 residences, 99 offices and a hotel with 146 rooms.

A new shopping and living experience are waiting for you in this project.

15.000 sqm of the project is leasable area, that contains 54 stores and 18 restaurant and cafe.

Consisting of the renovation of the historical heritage in its site, the project was designed to be in harmony with this historic district's traditional architecture.

One of the highlights of the project is the walking area which offers a brand-new shopping and living experience.



## Project

# Site

Nisantasi is one of the most prestigious neighborhoods in Istanbul, and it is an excellent choice for many families of visitors and tourists for a pleasant holiday.

Nisantasi is the home of Istanbul's most fashionable markets, with couture houses, international brands and boutiques from well-known designers, such as Louis Vuitton and Chanel.

Nisantasi is a vibrant neighborhood, where shops and restaurants are visited in large numbers of people during the day.



## Project Site

The project located in the heart of Istanbul, in the center of your life, in the prestigious Nisantasi district.

The project located in the heart of Halaskargazi, Rumeli and Valikonagi streets, very famous streets in Istanbul.

The project located just next to Osman Bey metro station.

The project located on Nisantasi district on the European side of Istanbul, in Sisli area.

Nisantasi district is one of the most beautiful areas of Istanbul, where it is characterized by many shopping malls, high fashion stores, and international luxury brands, in addition to the spread of cafes and restaurants that built in the classic European style.



# Project Site

Metro

**1**

Minutes

Istanbul  
Airport

**40**

Minutes

City's Mall

**2**

Minutes

Taksim

**5**

Minutes

Mecidiyekoy

**10**

Minutes

Metrobus

**15**

Minutes

Levent

**18**

Minutes



# Project's Features



Elevator



Security



Parking



Available  
Transportaion

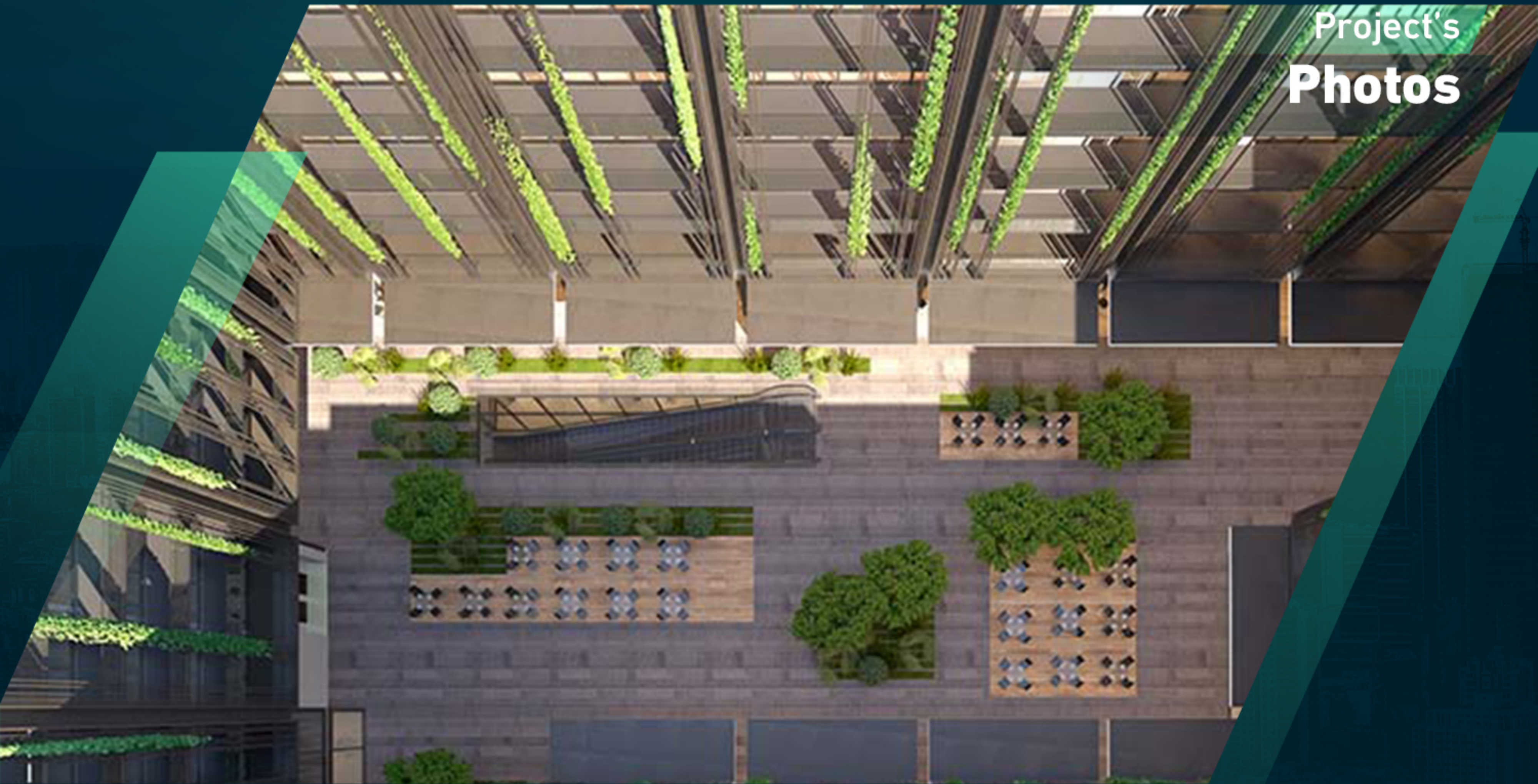




Project's  
**Photos**



Project's  
**Photos**



About

Us

**Right Home** is a leading company specializing in real estate consultancy and brokerage.

We help buyers **to buy** and sellers **to sell**.

We provide luxury apartments, smart homes, elegantly designed offices, modern constructions and all consultancy services.

Our head office located in **Istanbul**, Turkey.

**righthome**  
real estate consultancy

 righthome\_tr  
righthome\_tr  
righthome  
righthometr  
+90 212 573 51 93  
www.righthome.com.tr  
info@righthome.com.tr